

Photography

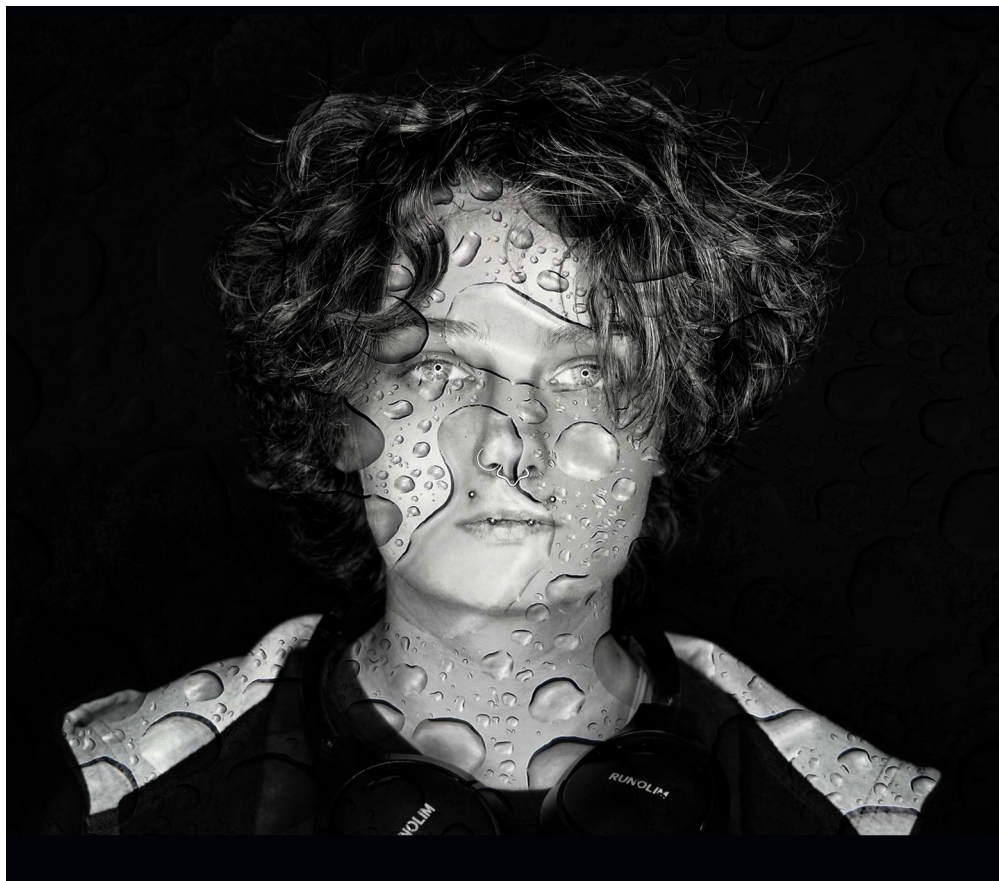
100%
Pass Rate

84%
A*-B Grades

45%
A*-A Grades

Excellent
analogue &
digital
facilities

**Creative &
challenging
briefs**



A Level Photography

Photography at Runshaw offers an in-depth knowledge of both traditional and digital processes. The course allows students to start at the very basics of photography incorporating analogue camera work, darkroom and film processes and experimental historic processes; this is then complimented by the introduction of using digital equipment and software such as Photoshop and Lightroom.

The course allows the students to have a complete understanding of all the different elements of photography and how these can be incorporated within their own work, and allows the students to learn a diverse range of photographic techniques and processes.

The facilities include a large well equipped darkroom which students can use within allocated class time and during open access sessions. There are also three well-equipped studios which use the latest lighting equipment, cameras and additional resources. This again can be used within allocated class time and open access time. The facilities allow students to really explore photography to develop and refine their skills further.

The photography course incorporates trips in year one which provide an opportunity to see contemporary and historic photography related to coursework themes. In Year Two, the students have an opportunity to go on a range of trips and visits to complete location 'shoots', enabling them to use local and national environments/buildings to create innovative photography work for their projects.

Photography at Runshaw is taught by staff who have worked within the industry of photography. They have all developed a wide range of photographic skills which complement each other and keep up to date with new and current techniques. If you are excited by the prospect of a future in photography, then this course at Runshaw is for you!

Entry Requirements:

A minimum of 5x Grade 5s, including Art & Design / Photography OR portfolio of work.

What's great about this course?



Excellent facilities
- Darkroom and
Lighting Studio



Industry experienced
tutors and specialist
technicians



runshawcoll/a-level-photography



[Runshaw_alevel_photography](https://www.instagram.com/Runshaw_alevel_photography)

For more information about our courses, visit runshaw.ac.uk
call **01772 643000** or email info@runshaw.ac.uk