

RUNSHAW COLLEGE

SCHOOL LEAVERS'
PROSPECTUS

2025

Begin your own
Runshaw Story...

R



Begin your own Runshaw Story!



**Over
1000**

A/A* grades achieved by our
A Level students!

3 in 4

of our Advanced Level students
achieved **High Grades! (A*-B
or equivalent)**

95%

of our Vocational students
progressed to their chosen
university course!

**The
Telegraph**

One of the Telegraph's best
colleges in the country for
getting a place at **Oxbridge!**

**Top
nationally**

in the DfE league tables, for
progression to **Russell Group
universities & Oxbridge!**

CONTENTS

Welcome to Runshaw	4	Mathematics (Further)	42
Runshaw Advantage	6	Media Studies	43
Additional Learning Support	12	Modern Foreign Languages	44
Horizons Programme	13	Music	45
Runshaw Scholars	14	Music Technology	46
Top College for Sport	15	Philosophy	47
A Levels	16	Photography	48
Apprenticeships	56	Physical Education	49
Vocational, Technical & T-Levels	60	Physics	50
How to Apply	114	Politics	51
Important Information	115	Psychology	52
How to get to Runshaw	116	Religious Studies	53
Social Media	117	Sociology	54
		Textiles	55

A Levels

3D Design	18
Accounting	19
Biology	20
Business	21
Chemistry	22
Classical Civilisation	23
Computer Science	24
Core Mathematics	25
Criminology	26
Drama & Theatre Studies	27
Economics	28
Engineering	29
English Language	30
English Language & Literature	31
English Literature	32
Extended Project Qualification	33
Film Studies	34
Fine Art	35
Geography	36
Geology	37
Graphic Design	38
History	39
Law	40
Mathematics	41

Apprenticeships

Accounting, Business & Customer Service	56
Childcare & Teaching	56
Leadership & Management	56

Vocational & T-Levels

Business	62
Computing & Digital	66
Professional Engineering	72
Foundation Learning	76
Health, Social Care & Childhood Studies	80
Media	86
Music & Performing Arts	90
Public Services	94
Science	98
Sport	102
Tourism	106
Visual Arts	110

Welcome

to

Runshaw



“We are extremely proud of our students. They are a delight to work with. I hope you will join us and I look forward to making you welcome at Runshaw”



Clare Russell - Principal & CEO

At Runshaw, you will find:

- outstanding teaching, from inspirational teachers
- a diverse, inclusive and respectful college community
- exceptional support, advice and guidance from staff who care about each individual
- the right course for you, so that you can explore your interests and find your passion
- an exciting and extensive range of extra-curricular opportunities
- that students are safe, happy and successful

Visitors to the college frequently comment on its happy and purposeful atmosphere. We believe this comes from the friendly and respectful relationships which exist between staff and students, creating a college community where each person is valued and can flourish. We are proud of our reputation and popularity. The successes of our students over the years has led to widespread national recognition.

We want every student to benefit from an environment conducive to learning. Our impressive college campus is full of high-quality learning and social spaces, resourced with industry-standard equipment and technology.

We are very much looking forward to you joining our college community. In the meantime, if you have any questions about any aspect of college life, please ask to speak to a member of our college admissions team on 01772 643000 or email welcometorunshaw@runshaw.ac.uk.

Exceptional results:

Runshaw students consistently achieve the highest average grades in the North of England!

Excellent

progression: to high quality destinations, including Oxford and Cambridge Universities, Medicine, Dentistry and Veterinary Science courses, prestigious conservatoires and competitive degree apprenticeships.

Unrivalled enrichment

and Horizons programme – over 60 activities to choose from.

Individual programmes of study: YOU control what you study, from an extensive range of courses.



Make lifelong
Friends

EVERY INDIVIDUAL MATTERS

As a student at Runshaw College, you are at the heart of everything we do. We believe in the power of education to change lives, so we prioritise inspirational teaching and learning, and provide you with all the support you need to achieve your goals and ambitions.

Above all, we want you to be happy here and to achieve your full personal and academic potential.

At Runshaw we provide:

Student Services & Wellbeing Hub for counselling, spirituality, health and wellbeing

Dedicated **Progress Mentors** for every student

Inspiring **Study** spaces

Make **lifelong friends**

Fantastic enrichment

opportunities, including lunchtime karaoke, quizzes, pool table, table football

Educational **visits** and **trips**

Have **your** say to shape the college:

- Personal Tutor Representatives
- Focus Groups
- Student Council
- Student Governors

Beautiful, vibrant and safe campus
Friendly social spaces



Beautiful
Campus



At Runshaw, you will receive high quality careers guidance. Specialist staff will help you prepare for your chosen next step. Every Runshaw student also benefits from the unique **'Runshaw CV'** to take away and use when applying for opportunities.



GETTING YOU FUTURE READY



Careers advisors

Individual Runshaw **CV** for every student

Apprenticeship **opportunities** in every area

Dedicated **UCAS** team

Wide range of **courses** from Entry Level to Level 6



At Runshaw, you will gain the skills and experience you will need for successful employment in the future.

You will have the opportunity to develop these skills through:

- **Work experience and industry placements with one of our hundreds of Partner Employers**
- **Volunteering: V50, V100 awards**
- **Student Ambassador work & charity fundraising**

The Duke of Edinburgh's
Award

Prestigious Competitions

CREST awards, UK Maths Challenge, Informatics Olympiad and many more!

GCSE Maths & English

First **Aid**



At Runshaw, you will gain an advantage over other candidates applying for your choice of job role or higher education place. We offer additional qualifications relevant to a range of career aims so that you can find one that will really help you get ahead!



EMPLOYABILITY SKILLS

Our Additional Learning Support (ALS) department is available to you if you have special educational needs (SEND), this means that you may have learning difficulties or a disability. ALS can create an individualised support plan for you to inform your teaching staff. This will identify strategies that will support you, to help remove barriers to your learning and achievement, and support your independence.

All students with SEND may choose to work quietly in the ALS department in study periods and access support from our Education Support Workers (ESWs). The ALS team can also give you guidance on the use of assistive technology and your eligibility for exam access arrangements.

Students may also be able access support with development of social and emotional skills, independent living skills and preparation for adulthood; life beyond college, whilst the ALS team can also help to signpost you to other support services across college. Transition support from high school to college is available, please contact us for further information.



If you have an Education Health and Care Plan (EHCP), you can access an enhanced transition to college life which can include additional visits and access to our Bridging days. Once enrolled, you will have your own Key Worker in the ALS team. A personalised support package will be agreed for you, in line with your outcomes, this could include both in and out of class support from the ESW team and additional literacy and numeracy support.

Please help us, to help you. It is important that you declare any additional needs or previous exam access arrangements. This could include for example if you were given extra time in your exams, or had someone to read for you. Please let us know as soon as possible so that we can make sure you get the right support. You can do this when applying, during enrolment, or immediately upon starting at college. For further information, please contact us on **01772 503565** or email **ALSadmin@runshaw.ac.uk**. This information will only be shared with your teaching staff and is only used for the purposes of support planning.



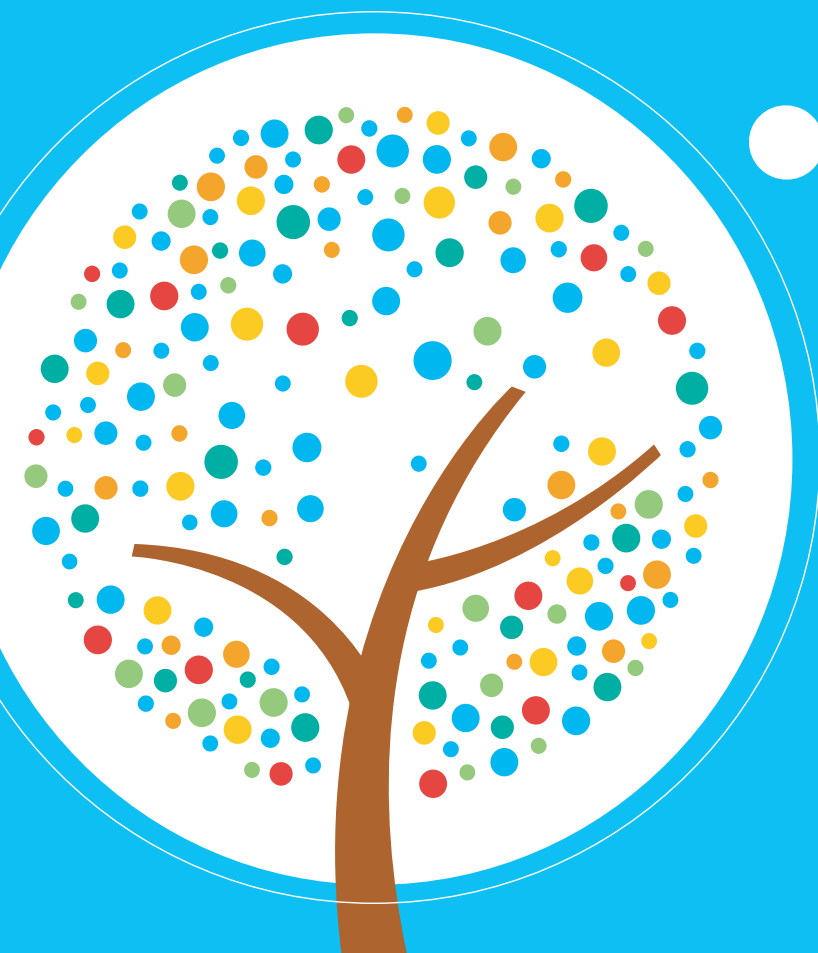
As part of the Horizons Programme, there is an opportunity to join an Academy in every subject at Runshaw!

Each Academy provides students with an unrivalled range of additional opportunities to challenge and stretch themselves beyond the syllabus, and help you stand out from the crowd.

For further details on opportunities please see our Horizons brochure.

Add value with extra activities

- Runshaw Scholars
- Sport Academy
- Art and Music Academies
- Science Academy
- Medical Society
- Dance and Drama Academy
- Debating Society - 'Think Tank'
- Law Mock Trials & Mooting



HORIZONS PROGRAMME

Extra help to realise your dreams

The Sunday Times newspaper gave Runshaw its highest AA grading for the support given to applicants to Oxford and Cambridge.

Currently, over 1200 former students are studying at the prestigious Russell Group and 1994 Group of Universities.



Runshaw Scholars is an exciting and challenging programme of support, offering mentoring for our highest performing A Level students to encourage successful applications to the UK's most competitive and prestigious universities. Students are selected for the programme based on their GCSE results.

Our Runshaw Scholars will have access to the following:

- Small group seminars led by a highly experienced former academic which will prepare students for the level of critical thinking and academic confidence expected as an undergraduate
- Links with our regionally affiliated Colleges at Oxford and Cambridge, plus visits to prestigious universities
- Outstanding support with the UCAS application process
- Emphasis on early applications for Oxbridge and Medical Sciences with workshops to support personal statement writing
- 1 to 1 interview coaching and support with admission tests



All students are eligible to join the Sports Academy, and they do not have to enrol on a sports course to be a member. The ethos of the Academy is excellence in both academic study and sporting performance.

Runshaw has exceptional facilities: a fitness suite, sports hall, 3G & a grass pitch, and a sports teaching block.

The coaches hold first degrees or higher in sport disciplines alongside relevant NGB coaching qualifications.

In addition, a number of the coaches either play sport, or coach players, at county and national levels.

Specifically, as a member of the Sports Academy you will:

- expand your mental, physical, technical and tactical awareness
- develop your coordination and concentration skills
- raise your performance levels
- improve effectiveness in your academic studies

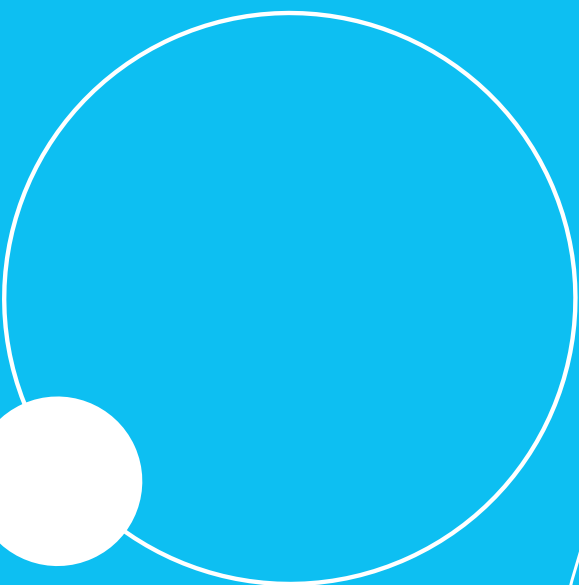
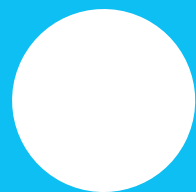


SCAN here



Welcome

to A Levels





#Future

Architect

Artist

Jewellery Designer

Interior Designer

Set Designer

Spatial Designer

3D DESIGN

Why should I come to Runshaw to study 3D Design?

Do you:

- have imagination and an interest in design?
- find researching past and present designers and artists exciting and inspiring?
- enjoy drawing and have the ability to develop ideas from a range of themes and topics?
- have an ability to visualise ideas on paper and in 3D?
- enjoy working and experimenting with 3D materials such as card, wood, metal, plastic, glass, clay and wire?

If so, then 3D Design at Runshaw is the subject for you! You will develop creativity, independent thinking, and the skills to express yourself in visual formats.

3D Design at Runshaw is not just about creating beautiful objects, it's about developing a set of skills that are invaluable in any field. You will develop a portfolio of work, which is a powerful tool when applying for design-related courses in higher education or apprenticeships. More importantly, 3D Design complements all other subjects, as the creativity, imagination, and problem-solving skills you will acquire are transferable to other courses, giving you a strong foundation for your future.

What will I study?

3D Design is a practical course where you will learn 'by doing'. This hands-on approach allows you to apply theoretical concepts in real-world scenarios, enhancing your understanding and skills. You will work in the 3D workshops to explore and create 3D work using various materials and techniques.

You will have the opportunity to work on various creative projects using the work of artists and designers and other sources to inspire your ideas. You will explore complex issues and context within design and how to develop your initial ideas to a resolved outcome.

Some of the specialist areas are:

- architecture
- sculpture
- interior products
- furniture design
- lighting design
- ceramics
- jewellery design



SCAN here

#YOU

**Specialist
3D workshop
Multi-disciplinary
Expert Teachers
and technician
support**

#ENTRY

**5x Grade 5s
including Art &
Design OR Graphic
Products / Resistant
Materials OR
portfolio of
work**

Please see our course leaflet at www.runshaw.ac.uk for more information. For guidance about what careers subjects can lead on to please access nationalcareers.service.gov.uk

#Future

Accountant

Actuary

Investment Banker

Management Consultant

Tax Accountant

Data Analyst

Why should I come to Runshaw to study Accounting?

Did you know the average qualified Chartered Accountant working in the UK earns more than £75,000 a year? No wonder it's such a popular subject!

Our teachers are all highly qualified and experienced and are also examiners. Thanks to their help and support, Runshaw Accounting students receive outstanding added value!

In addition to outstanding results, we have successfully supported a number of students with their progression to world-class study. These include the PWC Flying Start Degree in Accounting & Finance at Manchester and Newcastle Universities and gaining places on prestigious school leaver programmes with industry-leading firms, including KPMG, PWC, EY, Deloitte, RSM, and BDO. Imagine yourself in their shoes, achieving great heights in the accounting world!

We regularly have industry speakers and students engage in events to help prepare them for life after college. These include ICAEW interactive workshops, where students can gain insights from industry professionals and apply their learning in real-world scenarios, and trips to firms such as KPMG and RSM, providing a first-hand look at the day-to-day operations of leading accounting firms.

What will I study?

You will embark on a comprehensive learning journey that covers all aspects of accounting. To enjoy the subject and be successful, you will need to be logical and confident when working with numbers and able to analyse what these numbers show. You do not need any previous knowledge of the subject. The course aims to give you an understanding of the concepts and principles underpinning accounting theory and practice and its importance in various organisations. Within the course, you will study financial and management accounting.

How is the course assessed?

In Year 1, the course is assessed internally via a formal assessment. In Year 2, there are two written examinations that have a mixture of multiple choice, structured, and extended answer questions.

ACCOUNTING

SCAN
here



#YOU

Progress to
sponsored degrees
and training
contracts

Amazing industry
links

#ENTRY

5x Grade 5s,
including English &
Maths

Please see our course leaflet at www.runshaw.ac.uk for more information. For guidance about what careers subjects can lead on to please access nationalcareers.service.gov.uk

#Future

Biotechnologist

Doctor

Research Scientist

Dentist

Geneticist

Vet

BIOLOGY

Why should I come to Runshaw to study Biology?

Studying Biology reveals how all life is connected. From plants and animals to genes and evolution, this is the study of all living organisms and how they live and die.

At Runshaw, you will not only gain theoretical knowledge but also develop practical skills such as communication, professional discussion, and practical agility. These skills are highly transferable and will prepare you for a broader range of courses, making you feel prepared and confident in your academic journey.

A Level Biology is usually required if you're looking to study for a medical course at university.

At Runshaw, we offer a unique array of super extra-curricular activities, providing you with opportunities to participate in the Biology Olympiad, Science Society, Medical Society, and specialised A*/Oxbridge classes. These all offer a unique and exciting learning experience.

We run our coveted Medical Society for prospective doctors, vets, and dentists. This society prepares students for successful applications to prestigious universities and courses.

#YOU
Medical Society
Biology Olympiad
A*/Oxbridge classes

#ENTRY
5x Grade 5s,
including Grade 5 in
Maths and Grade 6
in GCSE Science OR
Biology

The career opportunities for biologists are incredibly diverse, spanning various locations and industries. From the Amazon to the Arctic, and across different health and science professions, the world is your oyster!

What will I study?

In AQA A Level Biology, we study a broad spectrum of topic areas including:

- Biological molecules
- Cell structure and cell division
- Cell membranes
- Exchange and transport
- Protein synthesis
- Respiration
- Nervous system
- Ecology
- Genetics

How is the course assessed?

The AQA A Level Biology course is assessed by written examination at the end of the two years. Twelve required practicals, including field work, will allow you to gain the Practical Endorsement certificate.

SCAN
here



Please see our course leaflet at www.runshaw.ac.uk for more information. For guidance about what careers subjects can lead on to please access nationalcareers.service.gov.uk

#Future

Human Resources

Marketing

Project Management

Finance Officer

Market Researcher

Sales Manager

Why should I come to Runshaw to study Business?

Business at Runshaw is a unique subject with a practical edge. The knowledge you gain here can be applied to a wide range of industries. After all, no matter your future career, it will have a business aspect!

Our students consistently surpass national benchmarks, a testament to the quality of education at Runshaw. Our teachers, with their extensive industry experience and roles as external examiners, ensure that our students receive the best possible guidance.

We also have a superb enrichment programme across the college, and we strive to stretch and challenge our Business students by offering additional activities and events where possible. This allows our students to refine their business skills through practical activities, workshops and guest speakers, making them better business leaders and attractive to employers. Both employers and higher education establishments will be welcome to attend our annual Business Futures Week event. Our most recent event welcomed over 25 guest speakers!

What will I study?

In the first year, our Business students delve into a variety of business contexts, from large corporations to small enterprises, both in the UK and globally. We focus on the strategies necessary for success in key functional areas such as Marketing, Operations, Human Resources, and Finance, as well as the fundamentals of business setup and management.

The focus in Year 2 is on the study of strategic decision-making at the highest levels of management. You will consider the impact of the external environment on strategic decision-making, strategies for successful growth, the value of leadership and planning, successfully managing change, and why strategies sometimes fail.

How is the course assessed?

There are three written examinations at the end of Year 2 which cover the content of the business specification.

SCAN
here



#YOU
Fantastic
Industry Links
Futures Week
Student Success

#ENTRY
5x Grade 5s,
including Maths &
a written subject

Please see our course leaflet at www.runshaw.ac.uk for more information. For guidance about what careers subjects can lead on to please access nationalcareers.service.gov.uk

BUSINESS

#Future

Chemical Engineer

Dentist

Doctor

Forensic Scientist

Pharmacist

Vet

CHEMISTRY

Why should I come to Runshaw to study Chemistry?

What makes Runshaw's A Level Chemistry program stand out? Our unique approach to teaching and learning, our dedicated and dynamic teachers, and our state-of-the-art laboratories are just a few of the reasons why you should choose us for your Chemistry studies.

A Level Chemistry provides skills useful in many areas of employment and is routinely required for progression onto numerous university courses.

Our students have consistently achieved A*-B grades above the national average for Chemistry. Our teachers are dynamic and highly committed to your success. We have large, modern, well-equipped laboratories, and all students are provided with a supportive study environment, ensuring you feel secure and cared for as you pursue your academic goals.

Enrichment takes various forms in Chemistry. We have competitions, trips, and talks by visiting speakers. We have also developed strong links with many top universities, and throughout the course, you will have the exciting opportunity to visit these universities, attend inspiring lectures, and participate in practical sessions, igniting your passion for Chemistry.

What will I study?

There are three main areas of study:

- **Organic Chemistry:** the study of the compounds of carbon. These compounds are used to make a vast range of useful products – plastics, fuels, pharmaceuticals, food and all living things
- **Physical Chemistry:** the hows and why of Chemistry, the study of reactions as a whole and how they behave
- **Inorganic Chemistry:** the chemistry of all the elements in the periodic table, their reactions and the compounds that they form

How is the course assessed?

Our A Level Chemistry course is not just about theory. It's a two-year linear course that includes a practical component. You will complete a list of required practicals, developing various skills along the way. At the end of Year 2, you will sit three separate 2-hour exams of approximate equal weighting. The marks gained in these three exams are combined to give your overall grade in A Level Chemistry.



SCAN here

#YOU
Science Society
Regular competitions
Links to top universities

#ENTRY
5x Grade 5s
including Grade 6
in Maths and Grade
6 in Science OR
Chemistry

Please see our course leaflet at www.runshaw.ac.uk for more information. For guidance about what careers subjects can lead on to please access nationalcareers.service.gov.uk

#Future

Archivist

Heritage Manager

Museum Curator

Barrister

Journalist

Solicitor

Why should I come to Runshaw to study Classical Civilisation?

Our classroom experience allows you to become immersed in this fascinating period of history that has shaped the modern world. Lessons involve multi-media resources, artefacts and visits to Greece and Rome.

A Level Classical Civilisation at Runshaw has been meticulously designed to provide learners with a comprehensive, coherent, and rewarding study of the literature and culture of the classical world. It allows learners to delve into the literature, visual and material culture and thought of the classical world, gaining a profound understanding of their social, historical, and cultural contexts.

What will I study?

The course will provide the opportunity to study both Greece and Rome and their surrounding worlds. You will develop an understanding, appreciation and knowledge of the Greeks and Romans through the buildings, art, poetry, plays and philosophy they have left us with.

Specifically, the first year of the course will involve study of Greek art, as well as a study, in some depth, of Homer's *Odyssey*, an epic poem which tells the story of a hero's journey back from the Trojan War.

The second year of the course studies the Roman Epic Virgil's *Aeneid*, which will be compared and contrasted with the *Odyssey*, as well as an overview of the Greek religion and philosophical attitudes towards the Gods.

CLASSICAL CIVILISATION

SCAN here



#YOU

Active members of the Lytham St Annes Classical Association

Trips: British Museum (London), Greece, Rome and Naples

#ENTRY

5x Grade 5s, including English

Please see our course leaflet at www.runshaw.ac.uk for more information. For guidance about what careers subjects can lead on to please access nationalcareers.service.gov.uk

#Future

App Developer

CAD Technician

Software Developer

Game Designer

Security Analyst

System Analyst

COMPUTER SCIENCE

Why should I come to Runshaw to study Computer Science?

Despite the generous salaries offered, there is a need for more qualified candidates for technology-based jobs. Our Computer Science course at Runshaw not only equips you with the skills that employers and universities are seeking but also opens up a world of exciting career opportunities in the ever-evolving field of technology.

Our course structure is designed to provide every student with a comprehensive understanding of Computer Science. You will build a strong foundation in programming while also gaining a deep awareness of the management and organisation of computer system.

The Python programming language taught at Runshaw will further develop the skill set developed by a number of our learners at GCSE, but also gives students new to programming the essential skills to progress to university and employment.

At the Computing Academy, we are committed to providing our students with the best opportunities to develop their skills. You will have the chance to learn and excel in various programming languages, including Java and C#, under the guidance of experienced professionals,

ensuring a supportive and encouraging learning environment.

What will I study?

Our course is designed to equip you with practical skills that are highly valued in the industry. You will learn about contemporary processors, input, output, and storage devices, types of software, software development methodologies, data exchange, data types, data structures, algorithms, and legal, moral, cultural, and ethical issues. You will also learn how to think abstractly, ahead, and procedurally, and apply principles of computational thinking to an independent practical coding programming project.

How is the course assessed?

The course is assessed over three components:

Component 1: (40%) Computer systems

Component 2: (40%) Algorithms and programming

Component 3: (20%) Programming project



SCAN here

#YOU
Learn Python,
Java & C#
Excellent
Employer Links
Computing
Academy

#ENTRY
5x Grade 5s,
including Maths

Please see our course leaflet at www.runshaw.ac.uk for more information. For guidance about what careers subjects can lead on to please access nationalcareers.service.gov.uk

#Future

Archivist

Economist

Tax Inspector

Computer Scientist

Financial Analyst

Banker

Why should I come to Runshaw to study Core Mathematics?

Core Maths, a Level 3 qualification, not only earns you UCAS points for University but also provides invaluable support for students studying A Level subjects such as Psychology, Economics, Business Studies, Chemistry, Biology, Geography, and Computer Science, who may not be planning on doing A Level Maths alongside. This support can boost your confidence and performance in these subjects.

For those of you who have a passion for maths but are not doing an A Level in Mathematics, this course is designed with you in mind. It's suitable for students who enjoy maths and want to further their understanding and skills in the subject.

What will I study?

The course takes a practical, problem-solving approach, applying maths to real-world situations, which is both engaging and interesting.

Some examples of what you will cover:

- analysis of data
- maths for personal finance
- statistics and probability
- critical analysis of given data and models (including spreadsheets and tabular data)

Some universities have even lowered entry requirements given a good Core Maths grade.

SCAN here



CORE
MATHEMATICS

#YOU

70% High Grades

Holds UCAS points

#ENTRY

5x Grade 5s, including Maths

Please see our course leaflet at www.runshaw.ac.uk for more information. For guidance about what careers subjects can lead on to please access nationalcareers.service.gov.uk

#Future

Psychologist

Police Officer

Criminologist

Detective

Prison Officer

Social Worker

CRIMINOLOGY

Why should I come to Runshaw to study Criminology?

The L3 Applied Diploma in Criminology at Runshaw is a unique two-year course that can be studied alongside A Levels. Our teachers, who are specialists in the field, use a variety of innovative teaching methods to engage students in the study of crime, deviance, and society's response to these.

Rest assured, the pass rate for criminology at Runshaw is excellent, with 56% of students achieving A* - B grades.

At Runshaw, we offer outstanding support to all our students. We are committed to ensuring that you enjoy learning and continue developing multiple skills that will enable you to achieve your very best academic potential and progress further in education and/ or work in the future.

Moreover, we provide a wide range of enrichment opportunities, including our Horizons Academies and guest lectures from universities and professionals. These are designed to broaden your understanding of criminology and encourage exploration of topics beyond the course curriculum.

What will I study?

During the first year, you will study two units.

Unit 1 looks at different types of crime and public perceptions of crime, understanding why some crimes go unreported to the police and media. Unit 2 focuses on a series of criminological theories and will allow you to know why people commit crimes.

During the second year of the course, you will foster a deeper understanding of the criminal justice system and develop the skills needed to examine criminal cases and review verdicts. Unit 3 looks at the roles of personnel and processes involved from when a crime occurs until the verdict is passed.

In Unit 4, you will apply your knowledge of criminological theories to understand how and why we use punishment within the criminal justice system and evaluate the effectiveness of social control agencies, such as the police and prisons, in achieving their aims.



SCAN here

#YOU

**Amazing Academy
Experienced
specialist teachers
Focused exam
support**

#ENTRY

**5x Grade 5s, at
least one of which
is a Grade 5 in a
written subject**

Please see our course leaflet at www.runshaw.ac.uk for more information. For guidance about what careers subjects can lead on to please access nationalcareers.service.gov.uk

#Future

Actor

Director

Producer

Journalist

Playwright

Stage Manager

Why should I come to Runshaw to study Drama and Theatre Studies?

At Runshaw, we offer a unique Drama and Theatre Studies program that consistently achieves outstanding results in A Level Drama and Theatre. Our students, 74% of whom gained A* - B grades in the last two years, are provided with fantastic enrichment opportunities. They study within a department that performs many shows throughout the year and regularly visit professional theatres, allowing them to experience diverse live productions.

If you choose to study with us, you will be taught by two highly experienced practitioners of Theatre Studies, providing you with a dynamic learning experience. In addition to excellent teaching, we have a fantastic purpose-built drama studio and the Amanda Roocroft Theatre, equipped with state-of-the-art lighting and sound equipment.

The course is an exciting balance of practical and written assessments, ensuring you are well-prepared and introduced to a range of theatre practitioners, forms and styles.

The course also encourages a critical and sensitive response to the complexities of theatre, challenging you to look at the impact of different historical, social, and cultural factors. In addition to giving you excellent knowledge of classical theorists, playwrights, and practitioners who have changed the face of theatre, you will respond to the texts from the perspective of an actor, director, or designer.

What will I study?

The course is split over three components, 40% is a written exam and 60% is a combination of practical work and coursework.

Component 1: Studying two set texts and a live review of a theatre maker (written exam)

Component 2: Creating a devised piece of theatre with an accompanying working notebook

Component 3: Practical exploration of three different play extracts with an accompanying reflective report

DRAMA & THEATRE STUDIES



SCAN here

#YOU

A range of extra curricular productions, including an opportunity to perform at Edinburgh Fringe

#ENTRY

5x Grade 5s, including English

Please see our course leaflet at www.runshaw.ac.uk for more information. For guidance about what careers subjects can lead on to please access nationalcareers.service.gov.uk

#Future

Economist

Market Analyst

Journalist

Financial Consultant

Statistician

Accountant

ECONOMICS

Why should I come to Runshaw to study Economics?

Economics offers a unique insight into how the world works and will help you to understand many of the big questions facing people today, such as:

- How are families and businesses affected by major shocks such as Brexit or the pandemic?
- What can we do about climate change?
- Would patients pay more tax for a better NHS?

Our economics program at Runshaw is not just about understanding the world. It's about empowering you with the skills to analyse issues to a high standard. This provides an excellent foundation for higher education in areas such as economics, finance, business, management, accountancy, politics, and philosophy. Recent students have progressed to degree courses at top universities, fully prepared and empowered for their future studies.

At Runshaw, we don't just offer an economics program. We also provide a variety of enrichment opportunities to keep you excited and engaged. We run an active Economics Academy that debates and explores current issues and includes a vibrant book club. We also use our close links with top universities to organise

study visits and talks from specialist economic researchers and provide opportunities to develop your skills, for example, by entering the Lancaster University sustainable business competition. Past Academy topics have included the economics of football and the causes of the gender pay gap.

What will I study?

- how markets work and why they fail
- balance of payments and international trade
- developing countries and globalisation
- economic growth and recessions
- economics of the UK and Europe
- government economic policy
- inflation
- unemployment

If you plan to study for a Bachelor of Science (BSc) in Economics at a top university, they will likely ask for A Level Maths as well. This is because BSc courses often have a stronger focus on quantitative analysis and mathematical modelling. However, if you prefer a more qualitative approach to economics, Bachelor of Arts (BA) Economics courses that do not require Maths are also available. At Runshaw, we prepare you for both paths, ensuring you have the necessary skills and knowledge to succeed in your chosen course.

#YOU

Progression to
Oxbridge, LSE,
Warwick

Strong Industry
links

Enter national
competitions

#ENTRY

5x Grade 5s,
including English,
and 5 or above in
Maths



SCAN
here

Please see our course leaflet at www.runshaw.ac.uk for more information. For guidance about what careers subjects can lead on to please access nationalcareers.service.gov.uk

#Future

Automotive Engineer

Civil Engineer

Mechanical Engineer

Architect

Product Manager

Construction

Why should I come to Runshaw to study Engineering?

Our Engineering A Level is delivered by experienced, specialist teachers in well-equipped design suites. Project Management is an integral part of the course, and we have a wide variety of specialist provision that supports an excellent learning environment. There are always opportunities to gain support from experienced engineering teachers within your course too.

At Runshaw, our Engineering students enjoy a range of unique opportunities. These include visits to local universities and industrial sites, participation in competitions like the Crest Awards for Design, and an annual visit to the Kennedy Space Centre. Our students also benefit from our Architecture and Advanced Manufacturing Academies.

By studying Engineering at Runshaw, you can expect to progress to a wide range of University degrees or careers, including Architecture and most engineering disciplines. You will also develop valuable analytical, numerical, and problem-solving skills for various occupations and activities.

What will I study?

You will study topics which reflect modern developments and applications of Engineering. You will apply your knowledge, understanding and skills in designing and manufacturing prototypes and products to given situations and problems whilst demonstrating your higher thinking skills to solve the issues and evaluate the suitability of a design solution.

Key topics include:

- computer aided design
- 3D prototyping
- electronics
- mechanics
- higher mathematical analysis
- material science
- project manufacturing and management

ENGINEERING

SCAN here



#YOU

Architecture Academy
Fantastic facilities
Outstanding support

#ENTRY

Grade 6 Maths and 4x Grade 5s.
Ideally students will also be studying A Level Maths and 3D Design

Please see our course leaflet at www.runshaw.ac.uk for more information. For guidance about what careers subjects can lead on to please access nationalcareers.service.gov.uk

#Future

Advertising Executive

Lawyer

Publisher

Editor

Journalist

Teacher

ENGLISH LANGUAGE

Why should I come to Runshaw to study English Language?

Have a look at the questions below: if you answer 'yes' to all or most, then this is the subject for you.

Are you fascinated by language and grammar?

Are you curious about language and gender, technology and power?

Are you keen to discover how children learn language so quickly?

Do you ever wonder why - or if - accent and dialect matter?

English Language at A Level enables you to:

- develop skills of linguistic analysis and evaluation
- explore language usage in a wide variety of situations and social contexts
- respond to written, spoken and electronic texts
- study child language acquisition and language change

At Runshaw, you'll be guided by a team of passionate, dedicated, and highly experienced tutors. Their extensive knowledge of setting and marking papers for national examining boards ensures you're in good hands.

Our English Language students consistently achieve excellent examination results, with 100% pass rates and high grades rates well above national averages. This is a testament to the effectiveness of our team and the dedication of our students and tutors.

What will I study?

Prepare for a linguistic journey that's a world away from GCSE English, filled with exciting challenges and new discoveries!

You will explore the English language from all angles, delving inside to see how it works and ranging outside to understand its multiple influences whilst the unique and stimulating coursework will keep you engaged and excited about your studies.

#YOU
Creative Writing Society
English Society and English Academy
Debating Society

#ENTRY
5x Grade 5s,
including English Literature and Grade 6 in English Language



SCAN here

Please see our course leaflet at www.runshaw.ac.uk for more information. For guidance about what careers subjects can lead on to please access nationalcareers.service.gov.uk

#Future

Author

Journalist

Lawyer

Copywriter

Teacher

Editor

Why should I come to Runshaw to study English Language and Literature?

English Language and Literature, a subject that fosters personal growth and intellectual development, is a stimulating and varied choice at Runshaw. It's perfect for students who have a passion for both areas of English at GCSE level and are equally intrigued by non-fiction and non-literary writing as they are by great plays and novels.

You will delve into how meaning is constructed in writing and spoken language and learn new theories that will help you uncover the deeper meanings behind a person's language.

At Runshaw, our language and literature students consistently achieve excellent examination results, a testament to the quality of our education. With a 100% pass rate and a very high proportion of students achieving A*-B grades – the highest in the sector in 2019, we ensure that our students are well-prepared for their future.

At Runshaw, we believe in enriching your learning experience beyond the classroom. We run an annual city trip to Paris and London to complement our study of non-fiction writing about cities. We also organise theatre trips and university visits, offer creative writing support, and offer the opportunity to write for, or even run the college magazine. Our department is a close-knit community, with a team of talented, well-qualified, and committed staff who are passionate about their subject. Many are examiners and senior examiners, while others are published authors or hold higher degrees. This supportive and nurturing environment ensures that every student is cared for and guided towards their academic goals.

What will I study?

Over the two-year A Level course at Runshaw, you will embark on a literary journey like no other. You will study a novel, a biography, a play, a selection of poetry, and an anthology of non-fiction texts. Additionally, you will have the opportunity to complete a non-examined assessment (coursework) where you can choose the texts you study, giving you the freedom and control to explore your literary interests.

ENGLISH LANGUAGE
& LITERATURE



SCAN here

#YOU
Study Fiction and Non-Fiction
High grades group
Trips and visits

#ENTRY
5x Grade 5s,
and Grade 6 in
English Language
and English
Literature

Please see our course leaflet at www.runshaw.ac.uk for more information. For guidance about what careers subjects can lead on to please access nationalcareers.service.gov.uk

#Future

Author

Lawyer

Publisher

Editor

Journalist

Teacher

ENGLISH LITERATURE

Why should I come to Runshaw to study English Literature?

English Literature is an exciting, dynamic subject that allows students to study the work of some of history's greatest novelists, poets, and playwrights. It also opens up a wide range of career opportunities, from teaching and publishing to journalism and marketing.

Humans are the storytelling species: it's the most fundamental method we have for understanding the world – and you'll get to spend two years studying some of the best stories ever written.

At Runshaw, our English Literature students are not just learners; they are achievers. They typically achieve excellent A Level results, with pass rates consistently at 100% and high grades well above national averages.

Our course looks back into the past and covers modern literature in the real world. We arrange theatre trips to see the plays we study and have visiting speakers and poets share and discuss their work.

The department is staffed by dedicated teachers who love their subject - some have higher degrees and have published work of their own.

We can also help you with your Creative Writing if you are interested in contributing to the literary canon. This is an opportunity to not just study literature, but to become a part of it!

What will I study?

At Runshaw, you won't just study a range of poetry, drama, and prose writing. You'll immerse yourself in a rich tapestry of literary works, from the classics to modern masterpieces. For your coursework, you'll write an essay comparing two novels, one of which will be a 21st-century text. You'll also have the opportunity to present your analysis in a group discussion. You'll study the work of individual poets like William Blake in-depth, as well as modern drama and a variety of diverse writers throughout the ages, and of course, Shakespeare! Your progress will be assessed through a combination of essays, exams, and presentations.

If you love to read and are curious about the world, enjoy analysing texts at GCSE, or simply want to broaden your cultural horizons, then we'd love to welcome you onto our course!

#YOU

Visiting speakers and other extras
Enjoy novels, poetry and plays
High grades group

#ENTRY

5x Grade 5s including Grade 6 in English Language or English Literature and a Grade 5 in the other



SCAN here

Please see our course leaflet at www.runshaw.ac.uk for more information. For guidance about what careers subjects can lead on to please access nationalcareers.service.gov.uk

#Future

Doctor	Lawyer	Vet
Journalist	Teacher	Public Relations Officer

Why should I come to Runshaw to study the Extended Project Qualification?

The Extended Project Qualification, when studied alongside your A Levels at Runshaw, equips you with practical skills that are highly valued by universities and employers. These skills include independent working, research on topics of personal interest, and presenting your findings to others.

By studying the qualification, you will gain confidence in working independently, reading about a subject which interests you outside of your A Level studies, and presenting your findings to others.

As a result of these skills, many universities offer our EPQ students places with lower A Level grades if they also achieve their Extended Project Qualification. This makes it ideal for high achievers who want to secure places at top universities, as it can significantly enhance your university application.

What will I study?

It's entirely up to you! You can choose any topic you like, but it must go beyond the demands of the specifications of your A Level subjects. You'll be given a dedicated supervisor who will help shape your topic and guide your research, ensuring you're on the right track and making the most of your project.

How is the course assessed?

The Extended Project Qualification at Runshaw is assessed through a combination of a piece of extended written work (approximately 5000 words), a production log, and a presentation. This clear assessment process gives you a solid understanding of what is expected and how your work will be evaluated.

EXTENDED PROJECT QUALIFICATION

SCAN here



#YOU
 Enhance your application to university
 Create a project of your choosing
 Develop expert research skills

#ENTRY
 5x Grade 5s, including English

Please see our course leaflet at www.runshaw.ac.uk for more information. For guidance about what careers subjects can lead on to please access nationalcareers.service.gov.uk

#Future

Broadcast Presenter

Editor

Film Director

Journalist

Teacher

Locations Manager

FILM STUDIES

Why should I come to Runshaw to study Film Studies?

A Level Film Studies at Runshaw offers an excellent opportunity to develop critical and analytical skills for dedicated film viewers who want to understand how film functions as an art form. The art of cinema is placed into its industrial context through a study of contemporary and historical modes of production, distribution and exhibition.

At Runshaw, we offer a modern and comprehensive education in Film Studies. We nurture your analytical skills through case studies, critical perspectives, and an introduction to cinema from around the world. Our use of state-of-the-art DVD and digital projection technology enhances the close study of key sequences and frames. We also provide access to PC-based edit facilities for the study of narrative and narration, ensuring you are well-informed and knowledgeable in all aspects of Film Studies.

In addition to your lessons, you will have the opportunity to take part in lectures, masterclasses, trips with the Film and Media Academy, and enrichment activities through the Podcasting club.

What will I study?

The course aims to develop each student's knowledge and understanding of how a film works as a text through analysis and evaluation. Students will investigate how meanings and values can be read into a film and how film has historically developed as an art form.

Our students will not only develop a broad knowledge of film theory and spectatorship but also gain practical skills. By viewing case studies of individual films, they will understand the practical aspects of filmmaking, editing, and sound recording. These practical skills will not only enhance their understanding of film but also prepare them for careers and Film/TV/Media production courses in higher education.

#YOU
Film & Media
Academy
Skills Workshops
in filming, editing
& scriptwriting

#ENTRY
5x Grade 5s,
including English



SCAN
here

Please see our course leaflet at www.runshaw.ac.uk for more information. For guidance about what careers subjects can lead on to please access nationalcareers.service.gov.uk

#Future

Architect

Art Director

Artist

Illustrator

Gallery Curator

Print Maker

Why should I come to Runshaw to study Fine Art?

At Runshaw, our A Level Fine Art course stands out with its unique blend of various mixed media, a strong focus on painting, drawing, textural and image-based collage, and printmaking. The course kicks off with a diagnostic skill-building phase, where you'll delve into similar topics before choosing your own personal theme and area of investigation for the coursework unit.

You'll be taught in purpose-built studios, each designed to foster your creativity. With a dedicated print studio and access to an art study room when working outside of lesson time, you'll have all the resources you need. Enrichment activities include trips to art exhibitions, museums, and university taster days, enriching your artistic experience.

Upon completing the A Level Fine Art course, many of our students choose to further their studies with a year-long Art Foundation portfolio building course at Runshaw.

This often leads to exciting career paths in illustration, animation, graphic design, interior design, architecture, theatre design, costume and media make-up, film, fashion, or surface pattern textile design. Some students opt for further academic study in Classics or Art History at university, while others choose Psychology with the aim of entering a career in Art Therapy.

What will I study?

You will be taught a wide range of techniques, including oil and acrylic painting, mono printing, etching, screen printing, sizeable experimental drawing and large-scale paintings on canvas, wood and metal. You will work in sketchbooks, as well as on paper, boards, and canvas on a variety of scales. There is an option to present part of your development work in a digital format, and some students choose to display outcomes in a sculptural 3D or installation-based style.

As part of all practical projects, you will also complete:

- critical and visual analysis of sources to inspire your artwork
- drawing and recording: drawing from direct observation will be expected throughout the course

FINE ART

SCAN
here

#YOU
Art Academy
Creative studies
End of Year
Show

#ENTRY
5x Grade 5s,
including Art &
Design OR portfolio
of work

Please see our course leaflet at www.runshaw.ac.uk for more information. For guidance about what careers subjects can lead on to please access nationalcareers.service.gov.uk

#Future

Town Planner

GIS Analyst

Project Manager

Conservationist

Climate Scientist

Meteorologist

GEOGRAPHY

Why should I come to Runshaw to study Geography?

Geography is an engaging, diverse and topical subject. We investigate contemporary geographical issues to promote global awareness and work to develop a range of skills that employers highly desire.

Fieldwork is an essential part of Geography, and you will complete at least four days of fieldwork across the two-year course. You will visit places such as Liverpool, Manchester and the Fylde Coast to investigate regeneration and coastal environments. What's more, there is the thrilling opportunity to take part in a residential trip abroad in the first year, adding an international dimension to your studies and sparking your sense of adventure. Visiting speakers from universities and other organisations will provide opportunities for students who wish to take their studies beyond the A Level syllabus.

What will I study?

Geography is a skills-based course:

- Dynamic Landscapes investigates tectonic hazards and coastal change
- Dynamic Places examines globalisation, migration, and re-branding
- Physical Systems and Sustainability looks at issues of water and energy security
- Global Development looks at superpowers and geopolitical issues

Students at Runshaw have the freedom to shape their learning experience. You can carry out further research into topical case studies you are interested in, allowing you to delve deeper into areas that intrigue you. This flexibility empowers you to enhance your understanding and passion for Geography, putting you in control of your learning journey.



#YOU
Field trips,
both locally
& globally,
including
Iceland and
Italy

#ENTRY
5x Grade 5s,
including English
and Grade 5
in Maths or
Geography



SCAN
here

Please see our course leaflet at www.runshaw.ac.uk for more information. For guidance about what careers subjects can lead on to please access nationalcareers.service.gov.uk

#Future

Environmental Scientist

Geochemist

Oceanographer

Geophysicist

Hydrogeologist

Mudlogger

Why should I come to Runshaw to study Geology?

Geology at Runshaw College is an exciting and vibrant subject that appeals to science-based and physical geography students. It is a diverse subject with a mixture of applied, practical and theoretical work, delving into the Earth's structure, evolution and dynamics. We examine the vastness of geological time, the record of life on Earth, and the impact Geology has on our lives, from extracting mineral and energy resources to protecting us from geohazards.

Our course doesn't just cover the breadth of the earth sciences, it also shows you how to apply this knowledge in the real world. We examine rocks and the geological processes that formed them, the workings of plate tectonics, and why geologists examine fossils. This knowledge is then applied to real-world industry sectors in which geologists have prominent roles and to big questions, such as the evolution of life on land and what causes climate change.

One of the most exciting aspects of this course is the opportunity to experience Geology in the field. You will embark on day trips to important geological sites, allowing you to apply your knowledge in real-world

settings and witness the Earth's processes. Given Geology's scientific nature, we recommend that you include at least one other science subject, or maths, in your study programme. Rest assured, our experienced faculty is committed to providing you with the necessary support and guidance to excel in your studies. They will be there to answer your questions, guide your research, and help you develop the skills you need to succeed in the field of Geology.

What will I study?

You will study the following exciting topics over the course of the two years:

- plate tectonics, earthquakes and volcanoes
- rock processes and products
- environmental, economic and engineering geology
- the evolution of life, oceans and the atmosphere

SCAN
here



#YOU

Workshops and guest lectures from industry professionals
Opportunities to take part in university workshops

#ENTRY

5x Grade 5s, including Grade 6 in Maths as well as Grade 6 in Science OR Geology

Please see our course leaflet at www.runshaw.ac.uk for more information. For guidance about what careers subjects can lead on to please access nationalcareers.service.gov.uk

GEOLOGY

#Future

Art Director

Artist

Content Creator

Graphic Designer

Illustrator

Marketing Manager

GRAPHIC DESIGN

Why should I come to Runshaw to study Graphic Design?

This course encourages students to explore visual communication and ideas through a rich variety of media and techniques, including typography, printmaking, illustration and digital media. You will be inspired to work with traditional art techniques such as drawing, printmaking and collage, as well as cutting-edge digital tools.

Our course at Runshaw is designed to equip you with practical skills that are highly valued in the industry. You will learn to use specialist industry software like Photoshop, Illustrator, and InDesign, and apply these tools to image manipulation, vector graphics, and layout design. This hands-on experience will prepare you for a successful career in graphic design.

It's important to note that our Graphic Design course at Runshaw is distinct from a GCSE Graphic Products course. We focus on creating mainly 2D work, such as posters, flyers, and magazine articles. This clear focus will give you a solid understanding of the course structure. The course culminates in an end-of-year exhibition that showcases the amazing array of work our students have produced over the entire course.

What will I study?

You will investigate the main areas of Graphic Design:

- advertising
- illustration
- packaging
- typography (design using type and letter forms)
- computers in art and design
- historical and contextual studies in Graphic Design

Within these areas you will produce personal responses to set briefs with expressive and experimental use of different media, techniques and processes.

Previous briefs have included advertising campaigns, book cover illustrations, and packaging design, all of which focused on developing one's own use of visual language.



SCAN here

#YOU

Specialist Mac room with latest Apple iMacs and Adobe software
Industry experienced teachers

#ENTRY

5x Grade 5s, including Art & Design OR Graphic Products OR portfolio of work

Please see our course leaflet at www.runshaw.ac.uk for more information. For guidance about what careers subjects can lead on to please access nationalcareers.service.gov.uk

#Future

Journalist

Lawyer

Researcher

Business Manager

Publisher

Teacher

Why should I come to Runshaw to study History?

At Runshaw, the study of History is not just about dates and events. It's about delving into new and exciting worlds - the people, ideas, and events of times we are too young to have lived through. This journey of understanding the past will not only fascinate you but also enrich and deepen your understanding of humanity more generally and offer you new insights into the events of the present. As Martin Luther King Jr. said, 'We are not makers of History; we are made by History.'

At Runshaw, you will be challenged and given the tools to excel as an historian. As you develop your knowledge and abilities, you will acquire various academic and practical skills such as research, analysis, and communication.

What will I study?

At Runshaw, you will have the freedom to choose ONE of two History pathways, empowering you to tailor your studies to your interests and goals. You will also complete a Historical Investigation.

Historical Investigation (Coursework)

As part of your History course, you will complete an independently researched and written historical investigation. This project will not only test your research and writing skills but also deepen your understanding of a historical topic of your choice.

Pathway 1 - Early Modern History

- The Origins of Modern Europe: Monarchy, Conflict and Religion in Tudor England, & France in the Seventeenth Century
- The Tudors 1485 - 1603: a broad sweep through the problems of this despotic royal family
- Louis XIV of France 1660 - 1715: examining to what extent Louis XIV created an absolute monarchy from his magnificent palace of Versailles

Pathway 2 - Modern History

Crisis, Conflict and Power: Social, Economic and Political Transformation in the Era of the British Industrial Revolution and Weimar and Nazi Germany:

- Britain 1783 - 1885: a broad sweep of the industrial revolution, and the changing face of politics: Pitt, Peel and Disraeli, plus social reform
- Democracy & Nazism: Germany 1918 - 1945: an in-depth study of the rise of the Nazis under the Weimar Republic and the establishment of a totalitarian dictatorship

HISTORY

Modern



Early Modern



SCAN here

#YOU
Trips to Germany, Poland, France and London
Links with top universities

#ENTRY
5x Grade 5s, including English and History (if taken), otherwise another written subject

Please see our course leaflet at www.runshaw.ac.uk for more information. For guidance about what careers subjects can lead on to please access nationalcareers.service.gov.uk

#Future

Accountant

Criminal Investigator

Police Officer

Journalist

Lawyer

Manager

LAW

Why should I come to Runshaw to study Law?

Law is not just a subject, it's a fascinating and dynamic field that underpins all areas of life. The high-profile criminal cases that dominate the headlines every day are just a glimpse of the engaging nature of this subject. Places on law courses are highly prized, and rightly so, as they often lead to a lucrative career.

At the heart of Law at Runshaw is the Law Academy, where students from all classes and years come together every week to take part in a variety of additional activities to develop their practical legal skills and try their hand at extra-curricular legal skills and even undergraduate-level work. Guest speakers are a regular event with frequent presentations to students this year from local and national firms of solicitors, local authorities and industry. Students can also apply to become mentors to partner with high school pupils and work closely in preparing cases to present in front of real judges in the Bar National Mock Trial Competition.

Advanced-level lectures and the opportunity to work closely with a practising barrister in our specially adapted courtroom also ensure that those requiring the highest grades can achieve them.

At Runshaw, we enjoy our own unique courtroom, a feature that sets us apart from other institutions. This courtroom is not just a room, it's a learning environment that simulates real-life legal proceedings, providing our students with a hands-on experience that is invaluable in their legal education. Students benefit greatly from a vast array of enrichment activities which make Law at Runshaw very special:

- residential trips to London including the Houses of Parliament and the Supreme Court
- a strong tradition of Mooting with the annual Runshaw Moot Competition
- a strong tradition of success in the Bar National Mock Trial Competition – we have been regional event winners seven times (most recently in 2023)
- masterclasses and a wide range of guest speakers from local and national firms of solicitors, local authorities, universities and industry.
- support with degree apprenticeships.

What will I study?

Year 1:

Introduction to Law - The Legal System.
Criminal Law, Law Making and the Law of Tort

Year 2:

Contract Law and the
Nature of Law

#YOU
LNAT and
Oxbridge Support
Law Academy
Oxbridge
preparation
classes

#ENTRY
5x Grade 5s,
including English



Please see our course leaflet at www.runshaw.ac.uk for more information. For guidance about what careers subjects can lead on to please access nationalcareers.service.gov.uk

#Future

Accountant

Banker

Programmer

Architect

Engineer

Statistician

Why should I come to Runshaw to study Maths?

Studying mathematics at A Level is not just about mastering numbers and equations, it's about opening doors to a wide range of career opportunities. From the sciences to finance, economics, business, computer studies, and engineering, a degree in mathematics can significantly increase your earning potential and provide you with career choices that are the envy of many other graduates.

In addition to supporting students through their time at Runshaw, our A Level staff and student services team provide fantastic support to students wishing to progress to higher education. Many students go on to read Mathematics at prestigious universities in the UK and abroad, and a growing number are successfully gaining places on degree apprenticeships in industries such as Engineering and Finance.

The provision for students at Runshaw is excellent. Our staff are enthusiastic and well-qualified, and several are experienced examiners.

What will I study?

When you study A Level Maths at Runshaw, you'll delve into **Pure Maths**, a component that's essentially an extension of the Maths you're already familiar with from GCSE. Calculus, the mathematics of growth and change, on which so many applications depend, is introduced and developed, and you'll revisit algebra, graphs, and trigonometry, but in a more advanced and comprehensive way. These familiar ideas form the 'tool kit' on which all Maths is based, making the transition to A Level Maths a smooth and exciting journey.

Statistics is the mathematics of data or information processing. It extends many ideas, including averages, standard deviations, and probability distributions.

Mechanics is the study of forces and the movement of objects and has many applications in the sciences, particularly Physics and Engineering.

If you are excited about combining your studies with several challenges and significant enrichment, then A Level Mathematics at Runshaw College is for you!

MATHS

SCAN
here



#YOU
Weekly Maths
Academy
University entrance
exam preparation
Variety of trips
& visits

#ENTRY
5x Grade 5s,
including Grade
6 in Maths on the
higher paper

Please see our course leaflet at www.runshaw.ac.uk for more information. For guidance about what careers subjects can lead on to please access nationalcareers.service.gov.uk

#Future

Computer Scientist

Data Analyst

Financial Analyst

Engineer

Economist

Physicist

FURTHER MATHS

Why should I come to Runshaw to study Further Maths?

Further Mathematics A Level is not just for those who want to study Maths at University. Anyone who enjoys Maths and thinks they might wish to study a maths-related degree at University should seriously consider it.

The Further Mathematics programme produces exceptional results. To complement the class-taught mathematics, you will also have the opportunity to study additional material covering advanced mathematical concepts. This will further support and prepare you for your chosen degree course and develop the skills of independent, self-motivated study, which universities highly value.

Through our enrichment programme, you have the chance to take problem-solving to the next level and add elegant techniques to your mathematical skill set, which will also be extremely useful for completing entrance exams at prestigious universities such as Cambridge, Oxford, and Warwick.

What will I study?

You will study a wide variety of different areas of mathematics, including Pure, Mechanics and Statistics. Throughout the first year, you will study the core ideas utilised in A Level Mathematics coupled with elements of Applied Mathematics. This will equip you with the mathematical foundations required to confidently approach the second-year Further Mathematics course, where you will study Further Pure and Applied Mathematics. At the end of the two-year course, you will have achieved an A Level in Mathematics and an A Level in Further Mathematics.



SCAN here

#YOU
Oxbridge Programme
UK Maths Trust competitions
Additional modules

#ENTRY
5x Grade 5s,
including Grade 8
in Maths

Please see our course leaflet at www.runshaw.ac.uk for more information. For guidance about what careers subjects can lead on to please access nationalcareers.service.gov.uk

#Future

Camera Operator

Film/TV Director

Journalist

Digital Marketer

Radio Broadcaster

Sound Engineer

Why should I come to Runshaw to study Media Studies?

Students choose Media Studies for several reasons: some may wish to follow a media-related career path at university, and others may have a keen interest in one or more aspects of modern media and be curious about how it works.

Our teaching teams are led by published writers and examiners who recently helped our students achieve a superb 100% pass rate, with most students achieving A*-B grades and 15% achieving A's. Runshaw students' practical work is also regularly judged as being amongst the best in the country.

At Runshaw, we believe in learning by doing. In addition to our comprehensive curriculum, you will have access to fantastic enrichment activities, including visits, trips, and the opportunity to work with the British Youth Film Association on significant projects. These experiences will not only enhance your learning but also provide you with practical skills and industry exposure.

You can also progress to a wide range of related university courses, such as practical media courses (like film production, journalism, and digital media) and theoretical media courses (like media theory, cultural studies, and media history). Media Studies is an excellent preparation for English, Cultural Studies, Film Studies, Marketing and Promotion, and other Humanities and Business-related courses.

What will I study?

The first year focuses on introducing you to the main issues impacting contemporary media. You will examine the production of media products and how audiences access and engage with them. Media Studies examines the relationships between traditional media (film, television, newspapers, etc.) and e-media, and you will participate in the close study of several media products.

The second year allows you to investigate more advanced conceptual issues. This will help you understand how the media is part of our culture and its political and social impact. You will also work on creating your own media products.

MEDIA STUDIES

SCAN here



#YOU
Outstanding individual support for students
Travel opportunities

#ENTRY
5x Grade 5s, including English

Please see our course leaflet at www.runshaw.ac.uk for more information. For guidance about what careers subjects can lead on to please access nationalcareers.service.gov.uk

#Future

Business Manager

Intelligence Officer

Lawyer

Civil Servant

Interpreter

Publisher

MODERN FOREIGN LANGUAGES

Why should I come to Runshaw to study Modern Foreign Languages?

At Runshaw, our MFL team is not just a group of teachers, but a team of highly experienced A Level educators who are dedicated to guiding you towards your best performance in these challenging yet rewarding subjects.

Studying a language at A Level is a journey that demands commitment, but the rewards are not just academic. Beyond the joy of mastering a new language, you will also cultivate communication, critical thinking, and research skills that will open doors to a wide array of exciting opportunities.

Much class time will be spent working in your chosen language, developing your knowledge and proficiency by mastering its grammar and exploring its culture and society. You will receive weekly coaching to develop your speaking skills and prepare for the oral exam. You can access many up-to-date, relevant, and interactive language learning resources.

What will I study?

The A Level course builds on the knowledge, understanding and skills gained at GCSE. You will:

- explore the society, culture and history of your chosen language country
- further develop your fluency and cultural knowledge by studying one literary text and one film
- study advanced level grammar and language structures
- complete an independent research project in your chosen language

How is the course assessed?

You are assessed in three exams at the end of Year 2. Paper 1 consists of listening, reading, summary and translation comprehension activities; in Paper 2, you will write one essay in your chosen language on the literary text and one on the film. In Paper 3, your speaking ability will be assessed with a 20-minute unscripted speaking test.

#YOU
Cultural discovery
Outstanding individual support
Extra speaking classes

#ENTRY
5x Grade 5s, including English Language and Grade 6 in your chosen language



Please see our course leaflet at www.runshaw.ac.uk for more information. For guidance about what careers subjects can lead on to please access nationalcareers.service.gov.uk

#Future

Musician

Composer

Event Management

Music Therapist

Sound Engineer

Artistic Director

Why should I come to Runshaw to study Music?

As a Music student at Runshaw, you will have access to our state-of-the-art music facilities. These include a specialist studio equipped with a digital piano, grand piano, and four spacious, well-equipped practice rooms. Our facilities are designed to provide you with the best learning environment for your musical journey.

Our teachers are highly qualified, experienced examiners, many of whom are graduates of leading UK Conservatoires of Music and professional musicians who perform extensively. As a result, our grades are excellent, with consistent 100% pass rates and excellent added value.

You will have the unique opportunity to become a member of the Runshaw Music Academy. This membership will open doors to a variety of experiences, including trips, guest lectures, and numerous performing opportunities. You can join instrumental bands and ensembles, choirs, rock music workshops, and even go on concert tours.

Our students in recent years have progressed to:

- Birmingham Conservatoire
- The Royal Northern College of Music
- Royal Welsh College of Music and Drama
- Durham University
- Leeds College of Music
- Liverpool Institute of Performing Arts (LIPA)

#YOU

Runshaw Music Academy

Free 1:1 Instrumental Tuition

Specialist Workshops & Masterclasses

#ENTRY

Successful Audition & Interview

5x GCSE Grade 5 or above including GCSE in Music (or equivalent qualification) or ABRSM Grade 5 Theory

In 2023, the Music department created a partnership with Leeds Conservatoire and consequently, all of our students are guaranteed an audition, should they apply.

What will I study?

A Level Music covers the three areas of composing, performing and listening.

You will:

- listen to and analyse classical and jazz music
- perform solo pieces on your main instrument
- compose in a range of genres within the Western Classical and Jazz traditions.

How is the course assessed?

- Performance: 10-12 minute recital as a soloist, recorded in your second year
- Composition: one written to a brief and one free composition
- Listening & Analysis: a written exam covering aural skills, analysis and the historical context relating to Classical and Romantic music as well as Jazz and Popular Song

MUSIC

SCAN here



Please see our course leaflet at www.runshaw.ac.uk for more information. For guidance about what careers subjects can lead on to please access nationalcareers.service.gov.uk

#Future

Audio Engineer

Producer

Studio Manager

Musician

Software Developer

Teacher

MUSIC TECHNOLOGY

Why should I come to Runshaw to study Music Technology?

At Runshaw, our Music Technology course stands out for its practical approach, catering to the needs of creative musicians who aspire to produce top-notch audio recordings.

Our fantastic facilities, including a fully equipped Mac Suite with cutting-edge Pro Tools software, a recording studio with two live rooms, a large control room, a Pro Tools HDX system, and an extensive collection of industry-standard microphones, provide a secure platform for your learning and growth.

The music department facilities also include six practice rooms; all students can book our facilities outside lesson times.

We also organise a range of extra-curricular music activities through our Music Academy, such as Popular, Jazz and Classical Music Academies.

What will I study?

You will study:

- multi-track recording in the recording studio
- music production using a Digital Audio Workstation
- sound design
- music technology in performance
- special subject investigation

How is the course assessed?

At Runshaw, the Music Technology course is a single vocational option within the A Level Programme. On completion of Year 2, it is equivalent to a complete A Level, achieved through a selection of practical projects. The course is unique in that there is no final exam, and all units are formally assessed throughout the course, providing a comprehensive evaluation of your progress.

#YOU
Industry standards
Development of
music production
Outstanding
resources

#ENTRY
A minimum of 5x
Grade 5s including
GCSE Music OR
Grade 3 in ABRSM
Music Theory

Please see our course leaflet at www.runshaw.ac.uk for more information. For guidance about what careers subjects can lead on to please access nationalcareers.service.gov.uk



#Future

Advertising Executive

Business Manager

Lawyer

Barrister

Journalist

Teacher

Why should I come to Runshaw to study Philosophy?

As a Philosophy student, you will join a long and distinguished tradition of attempting to understand the world around us and our place within it. The word Philosophy comes from ancient Greek, meaning ‘the love of wisdom’. Philosophers attempt to gain ‘wisdom’ or ‘understanding’ by asking the most fundamental questions and answering them through conceptual analysis, empirical evidence, and rational argument.

Studying Philosophy will make you a more disciplined and logical thinker, and you will develop an ability to deconstruct and construct concise, rational arguments.

As 20th-century British philosopher Bertrand Russell said, “Through the greatness of the universe which philosophy contemplates, the mind is also rendered great.” If you are intrigued by intellectually challenging ideas and new perspectives, then Philosophy could be the subject for you!

Studying Philosophy as a single subject at University or in various combinations with other subjects such as Politics, Economics, Mathematics, Social Sciences, and Natural Sciences, is not just possible, but also practical. Philosophy will equip you with a range of skills that employers value, and you will find Philosophy graduates in a hugely varied range of jobs.

What will I study?

Questions such as:

- Is our perception of the world reliable?
- Does the existence of the universe require an explanation?
- What is the mind, and can we explain consciousness?
- How should we make decisions about what is morally right and wrong?

PHILOSOPHY

SCAN here



#YOU
Exciting enrichment
Fantastic support
Teachers are subject specialists and experienced examiners

#ENTRY
5x Grade 5s, including English

Please see our course leaflet at www.runshaw.ac.uk for more information. For guidance about what careers subjects can lead on to please access nationalcareers.service.gov.uk

#Future

Camera Operator

Fashion Journalist

Graphic Designer

Media Executive

Photo Editor

Photographer

PHOTOGRAPHY

Why should I come to Runshaw to study Photography?

A Level Photography allows you to learn various photographic techniques and processes. The course will enable students to extend their knowledge of both the technical and theoretical side, and encourages students to explore new ways of seeing the world.

In Year 1, you will develop a wide range of practical photographic skills, from traditional darkroom techniques to digital editing using software like Adobe Photoshop. These skills will be showcased in an online portfolio and an Instagram blog, demonstrating the quality of your work and enhancing your employability.

At Runshaw, we provide a supportive learning environment for our Photography students. Our dedicated Photography studio with a wide range of lighting and props and a fully equipped black-and-white darkroom are at your disposal. You will be taught in specialist, purpose-built studios and workshops by teachers who have worked in the industry in various fields, supported by a subject specialist technician.

Photography students have the opportunity to:

- go on study visits to galleries and photography shoot locations
- undertake real-life briefs
- create a portfolio of work

The Photography year culminates in the end-of-year public exhibition, which displays a fantastic array of students' work produced throughout the course and is something that all our staff and students look forward to.

What will I study?

You will investigate:

- black and white analogue and darkroom photography
- digital camera work and computer editing photography
- location photography
- studio incorporating experimental lighting photography

#YOU
Portfolio for progression
Digital/experimental skills
Specialist facilities

#ENTRY
5x Grade 5s, including Art & Design / Photography OR portfolio of work

SCAN here



Please see our course leaflet at www.runshaw.ac.uk for more information. For guidance about what careers subjects can lead on to please access nationalcareers.service.gov.uk

#Future

PE Teacher

Sports Coach

Sports Therapist

Physiotherapist

Sports Journalist

Sports Nutritionist

Why should I come to Runshaw to study Physical Education?

As a Physical Education student at Runshaw, you'll benefit from a flexible learning environment. Our comprehensive teaching is complemented by an interactive platform that allows you to access class notes, revision materials, quizzes, and guidance notes from anywhere, at any time. This flexibility is designed to accommodate your individual learning style and schedule.

At Runshaw, we believe in the power of practical learning. As a Physical Education student, you'll have the opportunity to apply the theories you learn in class during visits to universities. Here, you'll conduct Exercise Physiology laboratory testing and participate in practical workshops on training types and sports analysis, bringing your lessons to life.

After finishing your course, you can progress to university to study various disciplines, including Sports Science, Sports Studies, Leisure Management, Teaching, Sports Therapy, Physiotherapy and others.

Subject combinations should be considered carefully for those wishing to study Physiotherapy at university, and further advice should be sought.

What will I study?

Section A: Applied anatomy and physiology and exercise physiology, including the cardiovascular system, respiratory system, musculoskeletal system and biomechanics.

Section B: Skill acquisition and sports psychology, including classifications of skills, anxiety, theories of learning and motivation.

Section C: Sport and society and technology in sport, including the history of sport, barriers to participation, commercialisation and video analysis programmes.

Non Examined Assessment: Students are assessed as a performer or coach in a full sided version of one activity AND complete a written analysis of performance.

Exam 70% of A Level
NEA 30% of A Level

PHYSICAL EDUCATION

SCAN here



#YOU
Sports Academy
Exam support
tutorials
Excellent
facilities

#ENTRY
5x Grade 5s,
including PE (if
taken) and Science
OR Biology

Please see our course leaflet at www.runshaw.ac.uk for more information. For guidance about what careers subjects can lead on to please access nationalcareers.service.gov.uk

#Future

Astrophysicist

Medical Physicist

Research Scientist

Engineer

Meteorologist

Teacher

PHYSICS

Why should I come to Runshaw to study Physics?

Our Physics A Level is delivered by experienced, specialist teachers in well-equipped laboratories. The course includes practical work as an integral part of the curriculum, and we provide plenty of study materials. The course is structured to provide a comprehensive understanding of Physics, with opportunities for support with your work always available.

Enrichment activities in Physics include visits to local universities, CERN and other places of interest, such as Jodrell Bank, which are relevant to the course. Students can also participate in competitions such as the Physics Olympiad and the International Astronomy and Astrophysics Competition.

Our Physics students have a track record of success. Many have gone on to study Physics at top universities, and some have even participated in cosmology, particle physics, and engineering masterclasses at Lancaster University.

What will I study?

You will study topics which reflect modern developments in, and applications of, Physics:

- electricity
- mechanics
- particles and quantum phenomena
- radioactivity and nuclear energy
- waves and fields
- astrophysics



#YOU
**Physics Olympiad
 Science Clubs
 Prestigious
 Universities
 Class**

#ENTRY
**5x Grade 5s
 including Grade 6 in
 Maths and Grade 6
 in Science
 or Physics**

Please see our course leaflet at www.runshaw.ac.uk for more information. For guidance about what careers subjects can lead on to please access nationalcareers.service.gov.uk

#Future

Lawyer

HR Manager

Social Researcher

Journalist

Politician

Teacher

Why should I come to Runshaw to study Politics?

Politics is a great choice if you enjoy current affairs, debates and discussions and wish to study a vibrant and exciting subject.

At Runshaw we offer unique opportunities that set us apart. We regularly host visits from MPs and councillors, and students can also experience a field visit to Parliament.

Our Politics Academy offers unique opportunities too. Students have assisted in running mock elections at local high schools and have also taken part in a residential trip to London, visiting Parliament and the Supreme Court. They even engaged Speaker and Chorley MP Sir Lindsay Hoyle in a Q&A session in the historic committee rooms. These experiences are not just educational, but also provide a real-world understanding of politics.

Our 100% pass rate is a testament to the quality of education and the supportive environment at Runshaw. It shows that students not only enjoy but also achieve when studying Politics here, giving you the confidence to choose us for your education journey.

What will I study?

As most students will not have studied Politics previously, prior knowledge will not be an assumption, and our staff will be there to support and encourage skills acquisition in the first few weeks of the course. To help this, students will keep a political diary through their research into current affairs and developments.

The course itself particularly concentrates on the changeable values of British politics, including:

- electoral systems and voting behaviour
- issues in British politics today
- parties and pressure groups
- the politics of the USA
- ideologies

POLITICS

SCAN
here

#YOU
Political Diary
Visiting MPs
Mock Elections

#ENTRY
5x Grade 5s,
including a written
subject

Please see our course leaflet at www.runshaw.ac.uk for more information. For guidance about what careers subjects can lead on to please access nationalcareers.service.gov.uk

#Future

Criminologist

Educational Psychologist

Detective

Doctor

Sports Psychologist

Teacher

PSYCHOLOGY

Why should I come to Runshaw to study Psychology?

As a Psychology student at Runshaw, you will benefit from highly qualified staff who are committed to helping you succeed using a range of creative and diverse teaching methods. Many of our teachers are specialist A Level examiners, so our results are always excellent, recently achieving 58% A*-B grades. What sets us apart is our focus on practical application of psychological theories and our strong emphasis on research, which provides our students with a unique learning experience.

Additionally, our Psychology Academy offers several short courses for you to undertake a variety of projects, all of which are designed to encourage exploration of topics other than those studied on the course and further develop knowledge and skills to support your university application and chosen career progression.

When you complete your course at Runshaw, a world of opportunities awaits you. Many of our students continue their studies in Psychology or related subjects, such as Criminology. Others embark on careers in various specialist areas of Psychology, including occupational, child, clinical, criminal, sport, or educational Psychology.

Some choose to work in related fields such as social services, probation service, the police, the legal system, medicine, business, advertising, and teaching. The possibilities are endless, and your journey starts here.

What will I study?

The course will introduce you to the theories and methods of Psychology and offer you the opportunity to examine some of the explanations psychologists use to understand human behaviour and experiences.

Year 1: You will study the ways in which psychologists approach the investigation of human behaviour, such as social approach, cognitive approach, biological approach and learning theories.

Year 2: You will focus on the application of psychology to different areas of everyday life, such as clinical and criminological psychology. This will be assessed by three external examinations which cover the material from both Year 1 and Year 2 at the end of the year.

#YOU
Psychology
Academy
Experienced
Specialist
Teachers

#ENTRY
5x Grade 5s,
including a written
subject and Maths
or Science



SCAN
here

Please see our course leaflet at www.runshaw.ac.uk for more information. For guidance about what careers subjects can lead on to please access nationalcareers.service.gov.uk

#Future

Journalist

Lawyer

Social Worker

Business Manager

HR Manager

Teacher

Why should I come to Runshaw to study Religious Studies?

Religious Studies appeals to students who like to debate key philosophical issues and get to the heart of why people hold religious beliefs. They are interested in the world in which they live, in current affairs and how religion has been, to some extent, marginalised by modern developments, such as science. You do not have to have any religious commitment to study this course, and can be from any religious background. The essential quality for this course is to have a lively and enquiring mind!

On the course you will study a fascinating and varied range of arguments relating to:

- Ethics
- Philosophy of Religion
- Christianity

At Runshaw, we have an outstanding record of success in Religious Studies, with a 100% pass rate for the past seven years and 68% A*-B grades last year. As part of our commitment to providing a comprehensive education, we offer the Religious Studies Academy. This is a unique opportunity to extend your studies, taking part in trips, debates, and guest lectures to fully appreciate how the world can be interpreted and understood.

Many of our students progress to read many degrees at University as Religious Studies has transferable skills that will make you a strong candidate when leaving us. The critical thinking, research, and communication skills you will develop are highly valued in a wide range of careers, including law, education, and social work.

RELIGIOUS STUDIES

SCAN here



#YOU
Religious Studies
Academy
Trips and Guest
Speakers

#ENTRY
5x Grade 5s,
including a written
subject

Please see our course leaflet at www.runshaw.ac.uk for more information. For guidance about what careers subjects can lead on to please access nationalcareers.service.gov.uk

#Future

Teacher

Social Worker

Police Officer

Journalist

Intelligence Analyst

Social Scientist

SOCIOLOGY

Why should I come to Runshaw to study Sociology?

Sociology is the study of people in society, but depending on how we define society will determine how we study it. Sociologists are interested in finding out about a variety of social phenomena, including family, education systems, different cultures, religious beliefs, crime and deviance.

The pass rate for Sociology is excellent, and recently, 70% of students achieved A*–B grades. Our teachers' specialism, enthusiasm, and commitment ensure that our students enjoy and achieve while studying Sociology at Runshaw College.

Imagine also being part of the Sociology Academy, a vibrant platform where you can engage in lively debates and conduct research on topics that extend beyond the classroom. Why is the Far Right gaining momentum? Is technology and media shaping a new reality? How wide is the gap between the affluent and the underprivileged in our society? These are the kind of thought-provoking discussions you can be a part of.

We also attend many trips, visits and conferences, recent ones include:

- trip to a Buddhist temple
- trip to London (residential)
- guest speaker discussing domestic violence
- trips to Lancaster and Edge Hill Universities

What will I study?

You will be given opportunities to discuss and debate a whole range of topical sociological issues. A few examples of topics studied are:

- Why do some people join gangs?
- Why are more people getting divorced?
- Why do working class students underachieve in school?
- Why do some people join cults?

#YOU
Sociology Academy
Trips & Guest Lectures
Amazing support

#ENTRY
5x Grade 5s,
including a written subject



Please see our course leaflet at www.runshaw.ac.uk for more information. For guidance about what careers subjects can lead on to please access nationalcareers.service.gov.uk

#Future

Artist

Pattern Designer

Interior Designer

Fashion Designer

Retail Buyer

Teacher

Why should I come to Runshaw to study Textiles?

Studying Textiles at Runshaw is not just about learning skills, but also about personal growth. You will have the opportunity to explore the nature and purpose of all textile processes, discovering how initial ideas develop into finished products. You will work on themes that explore texture, colour, pattern, line and form, through experimentation with materials. This journey of exploration will inspire and motivate you, with the chance to explore areas of fashion, including design, illustration and creative embellishment.

You will work in our purpose-built studios where all aspects of textiles and fashion are not just taught, but highly encouraged. Our supportive learning environment is enhanced by visits from textile designers, who run workshops to introduce our students to new and exciting textile techniques and skills, exploring other artists' work, which will be used in coursework to inspire ideas.

For the last five years, Textiles students have gained 100% pass rates, a positive testament to our excellent teaching and learning.

The Textiles year culminates in the end-of-year public exhibition, which displays a fantastic array of students' work produced over the whole course and is something that all our staff and students look forward to.

After completing the course, you will be well-prepared to progress to university and take an Art-related degree course or a pre-degree Foundation Diploma in Art and Design. You will also have the skills and knowledge to pursue a career in the fashion industry, textile design, or other related fields.

What will I study?

Some of the subjects you will study are:

- appliqué and reverse appliqué
- garment design
- fashion design and illustration
- creating and developing surface pattern ideas
- creative machine and hand-stitch embroidery
- felt-making and manipulation

TEXTILES

SCAN
here

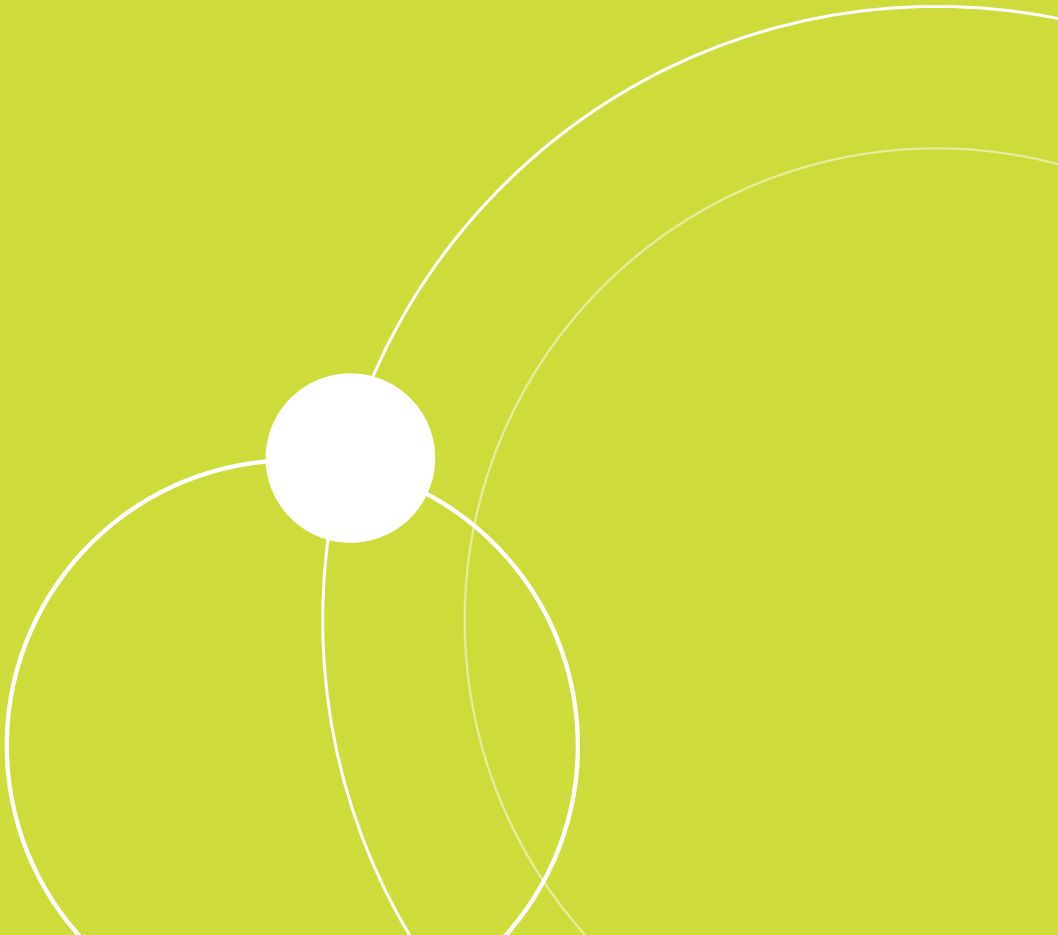
#YOU
End of Year Show
Excellent Facilities
Personalised
Learning

#ENTRY
5x Grade 5s,
including Art &
Design / Textiles
Technology OR
portfolio of
work

Please see our course leaflet at www.runshaw.ac.uk for more information. For guidance about what careers subjects can lead on to please access nationalcareers.service.gov.uk

Welcome

to Apprenticeships



#FUTURE

APPRENTICE

LOS ANGELES

LEISURE CLUB - EST. TWENTY THIRTEEN

01772 644077
SARGOLANDING
REG. PLUMB
01772 644020
LEISURE CLUB

Your Apprenticeship options

An Apprenticeship at Runshaw is a fantastic pathway into a **variety of industries**. It combines a real job with taught training. Our Apprenticeships are exciting and wide-ranging as we want you to leave **multi-skilled** and aware of all the opportunities that exist within industry. So whether it is Business, Childcare or Accountancy, our Apprenticeships will take you **where you want to go!**

Accounting

Business Administration

Customer Service

Improvement /Quality Practitioner

Early Years

Human Resources

Leadership & Management

Teaching Assistant

Team Leading



Scan here to find out more about our apprenticeship programmes and apprenticeship vacancies!



Welcome

to Vocational
& Technical,
including T-Level



What are Vocational & T-Level Courses?

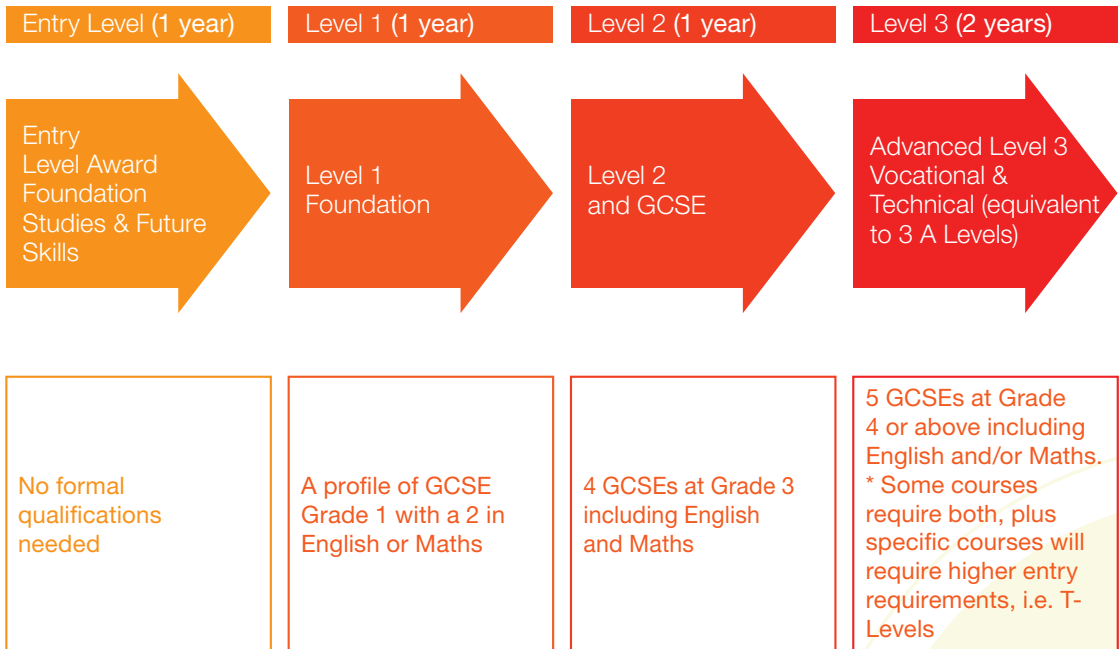
Our Vocational and Technical courses are career specific and will provide you with the skills, knowledge and experiences needed for the world of work or further study in Higher Education.

You choose one area and one level, studying it in detail. You will be assessed in many different ways – external **exams**, **assignments**, **portfolio**, or **practical assessment**. Work Placements and engagement with employers are embedded

in to each course and enrichment activities and English and Maths development are key components of your programme.

What progression is there?

As our vocational courses are strongly linked to the workplace, you will be in a strong position to either go straight into **employment**, secure an **apprenticeship**, or gain a place at a **top university**.



To find out more and apply for our courses please see our course leaflets on the Runshaw website www.runshaw.ac.uk and press the 'Apply' button to start your application.

Business

Business Level 2

Business Advanced Level 3

Business Management & Administration T-Level

T-LEVELS
THE NEXT LEVEL QUALIFICATION

A Vocational Business course at Runshaw is a fantastic pathway into the varied world of business and industry. Whether it is furthering your knowledge at university or going straight into employment, our Business courses will take you where you want to go!

Our Level 2 and 3 courses are exciting and wide-ranging as we want you to leave multi-skilled and aware of all the opportunities that exist within the industry. You will experience superb teaching and numerous enrichment opportunities. You will be involved in producing reports and other business documents, presentations and advertising materials, as well as various role-plays to develop key employability skills, such as interview technique, customer service, and pitching business proposals.

Please see our course leaflets at www.runshaw.ac.uk and press the **'Apply' button**. For guidance about what careers subjects can lead on to please access nationalcareers.service.gov.uk



Marketing Executive

Sales Executive

Retail Manager

HR Assistant/Manager

Finance Assistant

Customer Service

BUSINES

Level 2 Business

What will I learn?

Our courses are designed to provide you with a practical understanding of the essential elements of enterprise in the world of business. You will learn about marketing, finance, and other key areas, and apply this knowledge in real-world scenarios. You will also look at the ownership and structures of different businesses and decide on the best option for you when planning your own business start-up. As part of your study programme, you will also study Maths and/or English and undertake a work placement.

How will I be assessed?

You will have internal and external assessments. Coursework is set continually throughout the year, so you will always know how you are progressing.

What progression is there?

Successful completion of the course can lead to progression to a Level 3 course at Runshaw including Level 3 Business, T-Level, an Apprenticeship, or employment.

Level 2



Level 3



SCAN here

Level 3 Advanced Business

What will I learn?

You will develop a fundamental understanding of what is involved, both theoretically and practically, in becoming an effective business professional.

You will examine the core of business operations through various units. These include business functions and internal and external influences on businesses, including marketing, management of business resources, personal and business finance, leadership and teamwork, communication, and business ethics.

You will also cover the learning of specialised subject areas such as branding, digital marketing, international business, human resource management, retail and distribution, and the English legal system.

How will I be assessed?

Your internal coursework assessment will vary greatly and reflect the types of communications used daily in business, such as reports, presentations, debates, podcasts, and meetings. It will also include practical involvement in activities such as market research and managing a business team event activity. You will also sit external exams in areas such as business finance, marketing, and business decision-making.

What progression is there?

You could choose to go to university and study a wide variety of related topics, such as Law, Project Management, or Accounting. Alternatively, you could enter the world of work and specialise in Marketing, Finance, Sales, or Human Resource sectors.

#Future

Marketing Executive

Sales Executive

Retail Manager

HR Assistant/Manager

Finance Assistant

Customer Service

T-Level Business

What will I learn?

A T-Level in Business is ideally suited to those seeking a career leading to a Leadership or Management role. T-Levels offer a modern alternative to A Levels, incorporating high-quality classroom study with practical industry-related skills.

Year 1: You will complete the Management and Administration Core and will cover essential topics including:

- Business context
- People
- Quality and Compliance
- Finance
- Policies and Procedures
- Project and change management
- Business behaviours

Year 2: You will complete an Occupational Specialism in Team Leadership and Management. This means your knowledge, skills, and behaviours will be standard for entering the occupation or industry or studying further.

As part of the T-Level, you will also complete a substantial work placement (minimum 45 days) to further develop your skills in a working environment.

How will I be assessed?

Year 1: You will complete two external written exams from the Management and Administration Core component alongside an externally assessed project.

Year 2: You will complete your occupational specialism and an industry placement.

What progression is there?

T-Levels will provide you with opportunities to progress to university, Apprenticeships, or full-time employment in related specialist areas.



BUSINESS



Computing and Digital

IT with Business Level 1

T-Level Transition Level 2

ESports Level 2

ESports Advanced Level 3

IT Advanced Level 3

Digital T-Level

T-LEVELS
THE NEXT LEVEL QUALIFICATION

A vocational IT course at Runshaw is a fantastic pathway into the IT industry. Whether it is furthering your knowledge at university or going straight into employment, our IT courses will take you where you want to go!

All of our courses are exciting and wide-ranging as we want you to leave multi-skilled and aware of all the opportunities that exist within the industry.

Please see our course leaflets at www.runshaw.ac.uk and press the **'Apply' button**. For guidance about what careers subjects can lead on to please access nationalcareers.service.gov.uk

Welcome to our Virtual Learning Environment

- Announcements
- Library Resources

Course Information

- Course Information
- Yearly Plan
- Missed Learning
- Past Exam Papers and Markschemes
- Mock

Year 1

- Day 1 - Welcome
- Comp 1
- Comp 2
- Comp 3
- Python
- Topic Tests
- Revision
- Year 2 Content

Year 2

- 2021-22 C3 Coursework Deadlines and Assessment Policy
- Comp 1

IT Consultant

Programmer

Security Analyst

Software Developer

System Analyst

Systems Manager

Level 1 Foundation IT with Business

What will I learn?

Do you like working with computers? If you do, you should consider studying a Vocational Level 1 in IT!

Our courses are not just theoretical, they are practical and hands-on. We want you to develop the skills that will be directly applicable in the industry, and also the key employability skills that are essential for your future progression to employment.

As part of the course, you will also study English and Maths alongside your IT classes.

How will I be assessed?

The course is delivered through a combination of lessons and practical workshops and is assessed through coursework.

What progression is there?

Successful completion of this course may lead to progression in college, an Apprenticeship, or junior employment.

Level 2 T-Level Transition

What will I learn?

Do you like working with computers? Would you like a career in the IT industry? Do you enjoy working independently and problem-solving? If the answer is 'yes' to any of the questions above, you should consider studying the T Level Transition course at Level 2.

The course is mostly practical, with theory to underpin your understanding and prepare you for external assessment, and is delivered through a combination of lessons and practical workshops. You will study a variety of topics and develop key skills in:

- Data Analysis
- Cyber Security
- Programming
- Web Development

As part of the course, you will also study English and/or Maths.

What progression is there?

Successful completion of the course may allow you to progress to the Level 3 Digital T Level course, L3 Vocational IT/ Digital course, Apprenticeships or employment.



#Future

IT Support

Web Marketing

Cyber Security

Database Analyst

Software Developer

IT Security

Level 2 ESports

What will I learn?

Do you like gaming? Have you ever thought this love of gaming could be a future career? In Level 2 ESports, you will be introduced to the ESports industry from day one, establishing the different available career paths.

Whilst this is not a 'Gaming Course', the course will focus on a wide range of topics and apply them to the ESports industry, including:

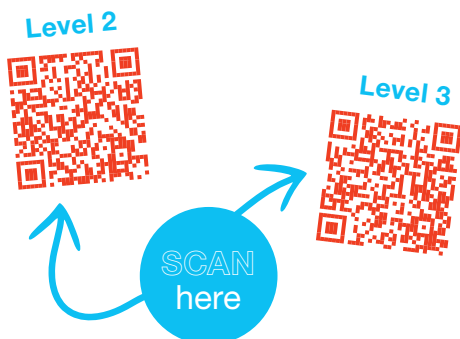
- Health and Wellbeing in ESports
- ESports organisations and teams
- Entrepreneurship
- Event Planning and Project management
- Streaming and Shoutcasting

How will I be assessed?

All units will be assessed through coursework and portfolio.

What progression is there?

Upon successful completion, you may want to progress to further study, such as Level 3 qualifications in ESports, Information Technology, Creative Media, Sport, Enterprise and Entrepreneurship, or Business, opening up a wide range of career opportunities.



Level 3 Advanced ESports

What will I learn?

Level 3 ESports is a course that blends content from different subject areas, including IT, Business, Media, Psychology, and Sport. You will develop knowledge and skills in each area. Units of study can include:

- ESports Skills, Strategies and Analysis
- Enterprise and Entrepreneurship in the ESports Industry
- Health, Wellbeing and Fitness for ESports Players
- ESports Events (event planning)
- Producing an ESports Brand
- Video Production
- Shoutcasting
- Nutrition for ESports Performance
- ESports Coaching
- Psychology for ESports Performance
- Ethical and Current Issues in ESports
- Sports and ESports Law and Legislation
- Launching Your ESports Enterprise
- Games Design

How will I be assessed?

The course is delivered as a combination of theory and practical, and you will be assessed via portfolio evidence for both the mandatory and optional units. This course has no external assessment or examinations.

What progression is there?

Upon completion, you will be able to pursue a career in Tech/ Digital/STEM industries/ ICT, Marketing, Entrepreneurship, Creative Media, Business Studies, Game Development, Academic Degree up to Level 7 or an Apprenticeship up to Level 6.

COMPUTING & DIGITAL

IT Consultant

Programmer

Security Analyst

Software Developer

System Analyst

Systems Manager

Level 3 Advanced IT

What will I learn?

The course is a technical, work-related course designed for those who wish to become professionals in the computing industry. You will complete projects and assignments based on realistic business scenarios. Areas include:

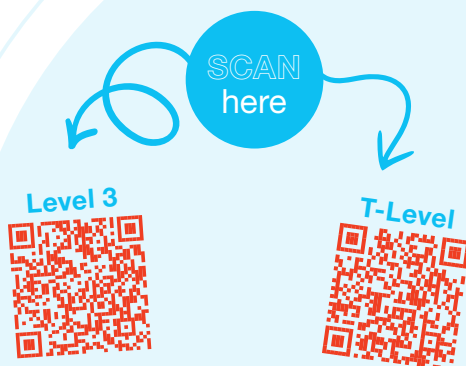
- Productivity Skills: MS Excel, MS Access, Project Management
- Programming: HTML, CSS, Python
- Data Analysis: Big Data
- Digital Design: Digital Graphics, Animation
- Digital Marketing: Social Media, Content Creation, Analytics

How will I be assessed?

The course is delivered as a combination of theory and practical, and you will be assessed through a portfolio and external assessment for core units set by the exam board. Internal assessments use various methods, including presentations, reports, posters, podcasts, role-plays and interactive quizzes.

What progression is there?

Upon completing this course, you can pursue a career in the Digital industry and progress to an apprenticeship or further study at university.



T-Level Digital Production, Design & Development

What will I learn?

Year 1: You will cover topics including:

- business context
- culture, including ethical and moral issues
- data management and modelling
- digital analysis and environment
- software and hardware testing

Year 2: You will follow an Occupational Specialism in Digital production, Design and Development. You will develop the necessary knowledge and skills to achieve 'Threshold Competence' in this specialist area.

Upon achieving Threshold Competence, you will have demonstrated that you can:

- design, implement and test software
- change, maintain and support software
- apply ethical principles and manage risks in line with the law when developing software applications

As part of the T-Level, you will also complete a substantial industry placement (a minimum of 45 days/315 hours).

How will I be assessed?

Year 1: Two externally assessed examinations and one employer set project.

Year 2: Synoptic project and an industry placement of 45 days.

What progression is there?

T-Levels will provide you with opportunities to progress to University, Apprenticeships, or full-time employment in specialist areas.



RUNSHAW COLLEGE

RAVENS

The School of Professional Engineering

Applied Professionals in **Engineering**

T-Level Design **Engineering**

T-Level **Civil Engineering**

T-LEVELS
THE NEXT LEVEL QUALIFICATION

A Professional Engineering course at Runshaw is a fantastic pathway into the world of engineering. Whether it is furthering your knowledge at university or going straight into employment, our engineering courses will take you where you want to go!

Please see our course leaflets at www.runshaw.ac.uk and press the '**Apply**' **button**. For guidance about what careers subjects can lead on to please access nationalcareers.service.gov.uk



Leica

SWISS Technology
by Leica Geomatics

Leica

LEVEL

STRUCTIVE
URES

Automotive Engineer

Civil Engineer

Mechanical Engineer

CAD Technician

Maintenance Engineer

Nuclear Engineer

ENGINEERING

Level 2/3 Applied Professionals in Engineering

Our courses are exciting, technically challenging, and wide-ranging so that you will be prepared for the amazing career opportunities within the industry.

Students have previously enjoyed guest speakers from national and international Engineering companies such as Cadent Gas and Robertson, plus a range of local Engineering companies. There are annual residential trips to places such as London and Design Your Future showcases, as well as other events such as sports days, half-termly fun days, and team-building.

What will I learn?

The Applied Professional Engineering courses incorporate exciting opportunities for students to develop their understanding and learning of engineering in preparation for progression into engineering apprenticeships or continuing to university.

The Programme offers a one-year transition programme, where you can choose to study either on an L2 BTEC or an L3 Advanced Programme in Engineering for two years, equivalent to 3 A Levels. This unique opportunity allows you to develop key underpinning skills and knowledge in fundamental subject areas, such as Engineering Design, Engineering Mathematics, and Computer-Aided Design, all taught by industry expert Lecturers. The Engineering Maintenance unit has been introduced to allow students to develop practical skills that further underpin their essential skills and prepare them for progression.

In addition to Engineering, you will have the opportunity to study Maths and English GCSEs if needed to maximise your progression opportunities.

Equally, our structured work placement package is an innovative and exciting addition to the Applied Professional study programme. This will include students participating in real work experience in the Engineering industry, and it will be facilitated by a structured calendar on a day-release basis. This hands-on experience will prepare you for the industry and make you feel competitive and ready for the job market.

How will I be assessed?

Assessment of student work will include project and assignment written and practical work, with the addition of external examinations.

What progression is there?

Apprenticeships or University are the main progression for students on the Applied Professional courses. Completing the one-year transition year will allow learners to progress onto further study in the Professional Applied programme.



#Future

Automotive Engineer

Civil Engineer

Mechanical Engineer

CAD Technician

Maintenance Engineer

Nuclear Engineer

T-Level Design and Developing for Engineering and Manufacturing

What will I learn?

Inspired and supported by a range of industrial partners, this unique course will develop your understanding of Engineering and will push and challenge your ideas and thought processes within Design.

Within your first year of study, you will explore various topics, including Principles of Design, Design Processes and Customer & Client Requirements. You will also gain a deeper understanding of the Maths & Science behind Design within Manufacturing.

How will I be assessed?

There will be a considerable amount of written and calculated work and investigation. The course is holistic, which means you will better grasp the content as it interweaves Design, Safety, and Applied Mathematics.

The course encompasses two exams, which cover all of the core content. They lead into an employer-set project that supports all of the learning that has taken place, including on your industry placement.

What progression is there?

Students can progress onto Apprenticeships with a range of companies and training providers or onto university to study a wide range of courses, including Engineering, Architecture, Automotive, and Mechanical Engineering, to name a few.




SCAN
here

T-Level Design, Surveying and planning for Construction (Civil Engineering)

What will I learn?

If you wish to work in the construction sector focusing on Civil Engineering, this T-Level is for you.

This course is best suited to students who prefer a practical applied approach to learning yet want a largely classroom-based course. The T-Level is equivalent to 3 A Levels and focuses on vocational skills to help you obtain skilled employment, University study or an Apprenticeship.

How will I be assessed?

Students will be assessed through a variety of methods, including observations, written assignments, formal examinations, employer-set projects (1st year), exams, and occupational specialist projects (2nd year). This comprehensive assessment, along with your 45 day Industry Placement, prepares you for your future career or further study.

What progression is there?

Students can progress onto roles such as civil engineering technician, CAD technician, consulting civil engineer and design engineer. Students have progressed on to university to study a wide range of courses, including Civil Engineering, Quantity Surveying, and Architecture, to name a few, and into careers with a variety of companies, including BAM, Eric Wright, Laing O'Rourke and Cadent Gas.



SCAN
here



ENGINEERING

Foundation Learning

Foundation Studies and Skills

Future **Skills**

Events, Tourism and Customer Service Level 1

Foundation learning courses are designed to introduce students to college study whilst improving their basic skills. The courses run over either 3 or 4 days a week.

Foundation learning has a variety of pathways. The courses are designed for young people who need extra support and time to develop their basic skills to enable them to progress in college. There are no formal qualifications needed to apply for these courses.

Please see our course leaflets at www.runshaw.ac.uk and press the **'Apply' button**. For guidance about what careers subjects can lead on to please access nationalcareers.service.gov.uk



Administrator

Catering Staff

Childcare Worker

Cleaner

Healthcare Worker

Shop Assistant

Foundation Studies & Skills

What will I learn?

Students on Foundation Studies and Skills (Entry levels 2 & 3) will study:

OCR Life Skills, which includes portfolio building and practical assessments in a range of life skills, including:

- Health and lifestyle
- Using public transport
- Supporting the local community
- Food safety and Cooking
- Managing my own money
- Functional Skills - English & Maths

Students will have the opportunity to complete a work placement in a hospital setting in a variety of roles that suit their career aspirations, and will also complete Functional Skills in English and Maths as part of the programme.

What progression is there?

Higher level Foundation Skills course.

Future Skills

Future Skills is a taster qualification and introduction to studying at college. The course is taught over 3 days a week.

Future Skills is a course designed for young people who need an extra year to find their chosen vocational career path and have studied at GCSE level. No formal qualifications are needed to apply for this course. Students will have an initial assessment to ensure they are studying at an appropriate level.

What will I learn?

This course will develop students' academic and employability skills, giving them options for a career pathway and progression onto further studies.

On the course, they will study Life Skills, Public Services, Prevent, IT, Health and Social Care, and Events Management. To add to the curriculum, students will also study Health and Safety, First Aid, and Food Hygiene.

Developing Maths and English skills is also a vital component of this course.

What progression is there?

- Progression onto a course at Level 1 or Level 2, or consideration for the Supported Internship Programme.
- Apprenticeships
- Employment



#Future

Travel Agent

Event Planner

Public Sector Worker

Customer Service

Receptionist

Retail

Level 1 Events, Tourism & Customer Service

This one-year course is designed to focus on the diverse tourism industry by developing tourism knowledge in event planning and customer service, and providing students with transferable skills. Students will learn in excellent facilities such as the preparation kitchen and mock aircraft.

This practical course will cover a variety of units, including:

- basic food hygiene
- the UK Tourism Industry
- delivering customer service
- planning a trip to a visitor attraction
- organising an event

How will I be assessed?

You will be assessed through a portfolio of evidence and practical observation.

What enrichment can I look forward to?

To enhance the learning experience and develop employability skills, students will also take part in a range of enrichment opportunities:

- team building
- trips and visits
- work based visits
- volunteering

What progression is there?

This programme will give you all the basic skills you need to progress onto Level 2 Business, Level 2 Tourism, or into the world of work.



SCAN
here



FOUNDATION LEARNING

Health, Social Care & Childhood Studies

Health, Care and Childhood Studies Level 1

Children's Play, Learning and Development (Early Years Practitioner) Technical Diploma

Education and Early Years T-Level

Health & Social Care Level 2

Health & Social Care Advanced Level 3

Health T-Level

T-LEVELS
THE NEXT LEVEL QUALIFICATION

At Runshaw, our Health, Social Care, and Childhood Studies courses stand out as a unique pathway into the world of Health, Social Care, Education, and Early Years. Whether you are furthering your knowledge at university or going straight into employment, our courses, with their focus on practical skills and industry-relevant knowledge, will take you where you want to go!

All our courses are exciting and wide-ranging, as we want you to be multi-skilled and aware of all the opportunities that exist within the industry. The Department of Health, Care, and Childhood Studies has helped students become nurses, health visitors, primary school teachers, and educational psychologists, among many other rewarding career paths. Please note that due to the placements, you will need to complete a Disclosure and Barring Services (DBS) check to confirm that you do not have any cautions or convictions that would question your suitability to work in these areas.

Please see our course leaflets at www.runshaw.ac.uk and press the **'Apply' button**. For guidance about what careers subjects can lead on to please access nationalcareers.service.gov.uk



#Future

Healthcare Assistant

Nurse

Occupational Therapist

Paramedic

Social Worker

Teacher

HEALTH, CARE & CHILDHOOD STUDIES

Level 1 Introductory Diploma Health & Social Care and Caring for Children

What will I learn?

The course is designed for students considering studying Health and Social Care or Childcare as an option in the future, and for those wanting to know what it is like to work in a care setting. It is an introductory course that will allow you to learn about the health and social care industry and childcare sector and your own skills and qualities. Some of the units covered in this course include communication skills, advising others about healthy lifestyles, supporting children with creativity, planning safe environments, and working with others in Health, Social Care and Childcare, all of which are practical and applicable to real-world situations.

As part of the course, you will also study English and Maths to enhance your employability skills.

How will I be assessed?

Assessment occurs throughout the course in various ways, including posters, presentations and written assignments.

What progression is there?

Successful completion of the course and additional qualifications may lead to progression within college onto the Level 2 intermediate course in either Health and Social Care, Childcare, or an Apprenticeship

Level 2 Children's Play, Learning and Development (EYP)

What will I learn?

This is a one-year course for anyone interested in working with children as a teaching assistant or Early Years Practitioner. Progressing onto higher-level courses can lead to qualifications that will help you gain employment in careers such as teaching or Early Years Education. The units studied cover all aspects of understanding and supporting young children's play and development, including helping children's physical care needs, supporting children's development through play, child development, and developing professional practice skills working in the early years.

How will I be assessed?

The course is assessed through coursework, which includes assignments, presentations, external assessments, and successful completion of each placement.

What progression is there?

The course prepares you to progress in college onto the next level in Education and Early Years, onto an Apprenticeship, or directly into employment as a Nursery Practitioner, as the qualification you will get provides a licence to practice as a Level 2 early years practitioner



SCAN
here



#Future

Teacher

Family Support Worker

Teaching Assistant

Midwife

Occupational Therapist

Social Worker

T-Level Education and Early Years

What will I learn?

This is a two-year course for those wishing to work with children in early years, primary, or special needs settings. You will complete 750 placement hours and four different placements, gaining experience working with children aged 0-7 years 11 months.

The course covers aspects of understanding and supporting children and how to apply this knowledge in the workplace, including Child Development, Play and Learning, Keeping Children Safe and Reflective Practice. Optional specialist units include Healthy Eating in Early Years, Children’s Development Outdoors and Supporting Children’s Imaginative Play and Creativity. You will also complete a portfolio of evidence in each placement.

How will I be assessed?

The course is assessed through a series of core exams, an employer-setting project, and an occupational specialism project in Year 2. You will also be observed and monitored during your industry placement.

What progression is there?

Many students go on to further study at universities such as Liverpool, Chester, and Edge Hill for Primary or Early Years Teaching, or directly into employment as an Early Years Educator, as the qualification you will get provides a licence to practice as a Level 3 Early Years Educator.

Level 2 Health & Social Care

What will I learn?

This is a one-year course for anyone interested in working with people, especially groups such as the young or the elderly, who need extra help or support.

Many students go on to follow careers in one of the caring professions. You will study various topics, including communication, supporting health and wellbeing, and working in health and social care environments.

How will I be assessed?

The course is assessed through coursework, which consists of assignments set at intervals throughout the year and some external assessments.

What progression is there?

Successful completion of the course can lead to progression in college, onto an Apprenticeship, or employment.

HEALTH, CARE & CHILDHOOD STUDIES

Level 2



T-Level



SCAN here

#Future

Healthcare Assistant

Nurse

Occupational Therapist

Paramedic

Social Worker

Teacher

HEALTH, CARE & CHILDHOOD STUDIES

Level 3 Advanced in Health & Social Care

What will I learn?

This course develops the skills and knowledge required for those seeking a career in Health and Social Care. You will enjoy work experience in carefully selected placements and study units covering different aspects of this field. Some units studied are Working in Health and Social Care, Infection Prevention and Control, Supporting Additional Needs, and Meeting Nutritional Requirements.

Placement is mandatory for completion of the course; therefore, you must be willing to work in various settings. Current settings include care homes, day centres, disability resource centres, doctors' surgeries, and pharmacies. You will also need to demonstrate good interpersonal skills, be open-minded and have a caring nature/ professional attitude.

How will I be assessed?

Assessments include written assignments, case studies, posters, leaflets, role plays, presentations and external assessments.

What progression is there?

Many students go on to further study at universities such as Liverpool, Salford, and Edge Hill, and many also progress to careers in social work, nursing, or psychology.

T-Level Health (Supporting Adult Nursing)

What will I learn?

You will enjoy industry experience in carefully selected placements and study units covering different aspects of this field. Some of the units studied include The Healthcare Sector, Scientific and Clinical Practice, Providing Person-centred Care, Health and Well-Being, Infection Prevention and Control in Health-Specific Settings.

How will I be assessed?

External assessments, case studies, practical assessments and professional discussions. To achieve the overall T-Level programme, you will complete at least 315 hours of industry placement (approximately 45 days).

What progression is there?

After completing this T-Level course, you will be able to progress to a degree in areas such as Nursing, Mental Health Nursing, Physiotherapy, Speech and Language Therapy and Dietetics. Alternatively, you may progress to a higher level Apprenticeship or find employment within the NHS or social care settings.



SCAN
here





COLLEGE
STUDENT

NHS
Lancashire Teaching
Hospitals
NHS Foundation Trust

STUDENT Runshaw College

01773 642771
SALFORD
01773 642771

Media

Creative Media Production Level 2

Creative Media Production Advanced Level 3

A vocational Media course at Runshaw is a fantastic pathway into the Media industries. Whether it is furthering your knowledge at University or going straight into employment, our Media courses will take you where you want to go!

All our courses are exciting and wide-ranging as we want you to leave multi-skilled and aware of all the opportunities that exist within the industry.

Please see our course leaflets at www.runshaw.ac.uk and press the **'Apply' button**. For guidance about what careers subjects can lead on to please access nationalcareers.service.gov.uk



Camera Operator

Editor

Magazine Editor

Director

Journalist

TV Producer

MEDIA

Embark on a unique vocational Media course at Runshaw, a pathway that opens doors to the dynamic Media industry. Whether you're planning to further your knowledge at University or dive straight into employment, our Media courses are designed to propel you towards your career goals!

You will participate in Runshaw TV, our college media production company which records events and produces videos for clients. We run inspirational projects that have included enrichment on make-up effects, CGI effects, Motion Graphics and a variety of skills workshops with our technician, who can deliver sessions on more professional aspects of the media, for example, studio procedures, studio lighting and colour grading. We also plan a programme of visits that includes Liverpool film locations, the National Science and Media Museum in Bradford and film screenings.

Level 2 Creative Media Production

What will I learn?

This course allows you to discover your creativity with our industry specialists. It links theory with actual media practice, and you will study:

- practical camera, soundtrack and editing production
- film promotion (trailer, film posters, interactive, social media)
- photographic and Photoshop skills
- magazine design (front cover, page layout, social media and interactive elements)
- audio skills including radio drama, interviewing and podcasting

You should also have an active interest in the media, enjoy working with other people, be creative, and love to learn about new techniques and software. The media industry is exciting and dynamic, and you need to be inquisitive, versatile, and adaptable to new technological changes.

How will I be assessed?

Assessment in our Media courses is designed to reflect the industry. You will work on various practical creative briefs, evaluating your learning through an online blog. This reflective process will help you advance your learning and develop the skills to confidently research, plan, and produce media productions.

What progression is there?

Most Level 2 Media Production course students progress onto our Level 3 Media Production course at Runshaw College. As this is a media skills-based course, some students seek radio, social media, web design, or media business Apprenticeships from local companies.



#Future

Graphic Designer

Content Creator

Copywriter

Photographer

Video Editor

Marketing Executive

Level 3 Creative Media Production

What will I learn?

This course allows you to discover your creative flair, develop practical skills, and lead to a career in the creative media industry. It links theory and understanding, with actual media practice.

You will study:

- practical camera work, soundtrack creation and editing production
- production management, pre-production, scripting and storyboarding
- advertising campaigns and music video production
- digital graphic design and motion graphics
- film studies, Documentary Film Making
- photography, image editing and layout design
- client-based work, multi-camera productions, studio work and practical skills

You should also be actively interested in the media, particularly film and television production, as you will be encouraged to seek work experience with local industries.

How will I be assessed?

You will work on various practical assignments that reflect media industry practice. Assessment is mainly done through various practical projects, including analysis, planning, and production.

What progression is there?

Progression routes lead into different media sectors, such as Film and TV, photography, broadcast journalism, games design, animation, and advertising and marketing. Students can move on to a more specialised degree programme, an apprenticeship, or straight into working with media companies.

Degree apprenticeships are becoming ever popular for progression, as students will create media content for a company while obtaining a degree.

MEDIA

SCAN
here



Music & Performing Arts

The Professional Performance Programme

Full time courses in · Acting · Dance · Musical Theatre

PPP - UAL Level 2

PPP - UAL Level 3

PPP - UAL Level 2 & 3

Advanced Musicianship Programme (AMP)

Here at Runshaw, we have a fantastic reputation for consistent success in the Performing Arts and are viewed by many as THE place to go if you are serious about your performance training. From the quality of our public shows, to the prestigious dance and drama schools that our students progress to, studying here guarantees you high-level training at one of the most successful colleges in England.

Our Professional Performance Programme will allow you to develop and extend your skills in Acting, Dance or Musical Theatre. You will have the opportunity to perform at the Edinburgh Fringe Festival, to dance at an international competition in Barcelona, and to watch a range of shows in Manchester, Liverpool and London's West End.

Please see our course leaflets at www.runshaw.ac.uk and press the **'Apply' button**. For guidance about what careers subjects can lead on to please access nationalcareers.service.gov.uk



Actor

Dancer

Teacher

Choreographer

Musical Theatre

Screenwriter

MUSIC & PERFORMING ARTS

When you choose to train on the PPP, you will need to decide which of the three specialist pathways you would like to follow:

Dance - On this pathway, you will be encouraged to develop your skills in a range of dance styles, along with one weekly acting and singing class.

SCAN here!



Acting - This pathway focuses primarily on acting, with some dance and singing technique, from naturalism through to physical theatre and classical performance.



Musical Theatre - This pathway offers equal levels of training in the three disciplines of acting, dance and singing.



Level 2 & 3 The Professional Performance Programme

What will I learn? - Level 2

The PPP Level 2 is an exciting, practical training course for students who want to develop their performance skills and pursue a career in the performing arts.

What will I learn? - Level 3

The Professional Performance Programme (PPP) is a challenging and rewarding course that is only available at Runshaw. It offers intensive, high-quality training for motivated students who want to pursue careers in the performing arts. Whereas A Levels focus more on theory than practical work, the PPP teaches hands-on performance skills. It thus gives students a much better chance of passing auditions for prestigious schools.

How will I be assessed?

You will take part in several projects over the two years. Most assessments last 6-8 weeks and consist of skills classes, followed by development sessions where you perform in front of a live audience.

You will also complete project books and evaluations, these will take the form of coursework as there are no written exams. After completing the course, you will gain an Extended Diploma from the University of the Arts London.

What enrichment can I look forward to?

- perform at the Edinburgh Fringe Festival
- drama school auditions
- workshops from visiting professionals
- cross-college shows
- become a member of the Runshaw Dance Academy and compete in the Barcelona Dance Grand Prix

What progression is there?

A high proportion of our students move on to prestigious institutions. In recent years, 75% of our students who applied gained places at accredited dance and drama schools. No other college in the North West can match these statistics. Some of the places that our students have progressed to include:

- Royal Academy of Dramatic Arts (RADA)
- Mountview Academy of Theatre Arts
- Rose Bruford College
- Liverpool Institute of Performing Arts (LIPA)
- Royal Conservatoire of Scotland
- Royal Welsh College of Music & Drama

#Future

Performer

Recording Engineer

Arranger

Composer

Producer

Marketing Executive

Level 3 Advanced Musicianship Programme

Runshaw's Advanced Musicianship Programme (AMP) is a full-time course aimed at developing students' abilities in music performance and production and nurturing a culture of creativity and experimentation in preparation for progression to prestigious higher education destinations or into work in the modern music industry.

As a music student at Runshaw, you will enjoy our superb industry-standard music facilities, including a specialist music rehearsal studio with a grand piano and four spacious, well-equipped practice rooms. You will also have access to our newly equipped recording studio and Mac suites, running top-of-the-range music software such as Pro Tools, Ableton Live and Sibelius.

What will I learn?

As a student on the AMP, you will develop your skills in performance, recording, mixing, mastering, music business, and theory. You will complete industry-standard projects culminating in professional-standard products such as a concert or studio recording, perform as a soloist and ensemble member in various genres, and work with performance and technology in creative and explorative ways to find your unique musical voice.

You will also benefit from involvement in our Music Academy activities, including Jazz, Pop and Classical ensembles.

How will I be assessed?

Assessments take place throughout the year through practical project-based assignments. There is no exam, and your assessment is 100% coursework. Every task will be part of an industry-standard project. You will propose, research, develop and evaluate a final project at the end of each year which will decide your final grades. At the end of your qualification, you will achieve a UAL Level 3 Extended Diploma in Music Performance and Production.

What progression is there?

In recent years, our music students have progressed to some of the best music colleges in the UK, including the RNCM, Birmingham Conservatoire, Durham University, Leeds Conservatoire, and LIPA.



MUSIC & PERFORMING ARTS



Public Services

Public Services & Sport Level 1

Public Services Level 2

Protective Services (Uniformed) Advanced Level 3

Social Sciences Advanced Level 3

A vocational Public Services course at Runshaw is a fantastic pathway into the Public Services. Whether it is furthering your knowledge at University or going straight into employment, our Public Services courses will take you where you want to go!

We have a variety of enrichment activities, such as:

- team building activities
- outdoor pursuit activities
- visits to various Armed Forces establishments
- voluntary work
- fundraising activities

All our courses are exciting and wide-ranging as we want you to leave multi-skilled and aware of all the opportunities that exist within the industry.

Please see our course leaflets at www.runshaw.ac.uk and press the **'Apply' button**. For guidance about what careers subjects can lead on to please access nationalcareers.service.gov.uk



#FUTURE

FIRE FIGHTER

#Future

Armed Forces

Border Force Officer

Fire and Rescue

Personal Trainer

Police Officer

Sports Coach

PUBLIC SERVICES

Level 1 Public Services and Sport

What will I learn?

On this course you will be looking at a balance of subjects from dealing with major incidents to learning how to coach your peers in a sport of your choice. With a weekly practical session where we look at the leadership qualities needed to lead a group of peers effectively, you will be able to take your skill set forward to your future course in either Public services or Sport.

How will I be assessed?

Assessment is a crucial part of your learning journey. It occurs through a mix of coursework, practical activities, and continual assessment throughout the year. This may include some external assessments, providing a comprehensive evaluation of your progress.

What progression is there?

Once you have successfully completed this course, you can progress to college or into employment in a range of uniformed public services or non-uniformed services.

Level 2 Public Services

What will I learn?

The course is delivered through a mixture of practical, theoretical, and work-related tasks and activities where you get the chance to study many different aspects of all the public services, meet real life staff and officers, ask questions, and get the advice and support you need to be able to join them. The subjects you will study are interesting and fun and will enable you to really excel in both academic and practical ability.

You will learn about:

- employment opportunities
- teamwork skills
- expedition skills
- security in the services
- crime and its effects
- health and fitness
- emergency responses to incidents

As part of the course you will also study English and Maths to develop your employability skills.

How will I be assessed?

The course is assessed continually throughout the year by coursework, and there will also be an exam for Unit 1.

What progression is there?

Successful completion of this course may lead to progression onto a Level 3 course, employment or training.



SCAN here



#Future

Armed Forces

Border Force Officer

Police Service Officer

Prison Officer

Probation Officer

Paramedic

Level 3 Advanced in Extended Protective Services (Uniformed)

What will I learn?

You can expect an engaging course with an industry focus delivered by staff with recent industry experience. The course is made up of a wide subject base including the study of major incidents, criminology and expedition skills, and law and the legal system.

The core curriculum will give you an underpinning knowledge in a wide range of relevant and up to date public sector areas that include:

- leadership
- politics
- discipline
- crime and its effects on society
- health and fitness

How will I be assessed?

The course is 80% theory and 20% practical. You will participate in the practical sessions, which may include a residential, in order to fulfil the requirements of the course.

All assessment is via coursework, either in the classroom, during activities in sports facilities, or outdoors.

What progression is there?

A wide range of careers are available to you on completion of the course, including uniformed Public Services, whilst many students also go on to university.



SCAN
here



Level 3 Advanced Social Sciences

What will I learn?

The course content relates to three main subject areas of Law, Criminology and Psychology. You can expect a deeply interesting, engaging and contemporary course that is delivered by staff who have extensive and highly relevant vocational experience.

The course will also develop and further enhance your written and oral communication skills, research and critical thinking skills, and creative thinking skills. In addition, you will acquire highly relevant leadership skills and qualities that will vastly improve your future employability prospects.

How will I be assessed?

Assessment will include a range of methods from traditional external examinations, controlled assessments and assignments.

What progression is there?

Successful completion of the course will allow direct entry to a Law, Criminology, or Psychology (or related subject) degree at university or a combination of these subject areas. This will then significantly contribute to future careers such as Solicitor, Barrister, Criminal Intelligence Analyst, Police Officer, Probation Officer, or even Psychologist.

PUBLIC SERVICES

Science

Applied Science Advanced Level 3

Healthcare Science T-Level

T-LEVELS
THE NEXT LEVEL QUALIFICATION

A vocational Science course at Runshaw is a fantastic pathway into the Science industries. Whether it is furthering your knowledge at university or going straight into employment, our Science courses will take you where you want to go!

All our courses are exciting and wide-ranging as we want you to leave multi-skilled and aware of all the opportunities that exist within the industry.

Please see our course leaflets at www.runshaw.ac.uk and press the **'Apply' button**. For guidance about what careers subjects can lead on to please access nationalcareers.service.gov.uk



#Future

Biomedical Scientist

Pharmacist

Veterinary Nursing

Marine Biologist

Radiographer

Laboratory Assistant

SCIENCE

A vocational Applied Science course at Runshaw is a fantastic alternative to A Levels and a respected pathway into Science and Health-related industries.

We work with local employers, including BAE Systems, Astra Zeneca, and local NHS Trusts, to ensure our vocational Applied Science course is related to real-life contexts. This ensures you are multi-skilled and aware of all the opportunities within the science and healthcare sectors.

What enrichment can I look forward to?

Enrichment opportunities include guest speakers from local universities and employers, biology society, chemistry society, and physics society, as well as the chance to complete a nationally recognised Crest Award project. In addition, you also have the opportunity to complete a science or health-related work placement where you can apply your understanding in the workplace and explore potential career pathways.

Level 3 Advanced Applied Science

What will I study?

This course not only enhances your understanding of scientific theory and skills, but also equips you with practical techniques that are highly valued in the workplace. Whether you're aiming for employment, an apprenticeship, or a university degree, our vocational Applied Science course prepares you for the real-world challenges you'll face.

This vocational course combines biology, chemistry, and physics at Level 3 with some mathematical elements.

Our course offers a diverse range of scientific subjects, ensuring you gain a comprehensive understanding of the field. You'll delve into areas such as Human Physiology, Medical Physics, Inorganic Chemistry, and practical application and research, broadening your scientific knowledge and skills.

Throughout the course, you will have the opportunity to perform a variety of investigative experimental work. You will also learn how to work safely within a laboratory environment and to use Maths and statistics to analyse experimental data.

How will I be assessed?

The course will be assessed through a combination of examination units, practical assessments, and coursework assignments. The exam units will test your scientific knowledge and understanding of biology, chemistry, and physics, as well as your maths and practical skills.

The remainder of the course will be assignment-based units, in which you will complete a variety of assessed tasks, including practicals, written reports, and research tasks.

What progression is there?

Students can progress directly into laboratory-based work, such as a lab technician role, an apprenticeship, or a university degree course. Past students have progressed onto university courses such as pharmacy, medical science, biomedical science, forensic science, physiotherapy, nursing, audiology, engineering, biology and chemistry.



#Future

Biomedical Scientist

Pharmacist

Veterinary Nursing

Marine Biologist

Radiographer

Laboratory Assistant

T-Level in Healthcare Science

We are delighted to be able to offer the T-Level in Healthcare Science at Runshaw College from September 2025. This two-year Level 3 Technical qualification is designed to give you the academic knowledge and occupational competency required for a rewarding and exciting career within the healthcare sector.

You will benefit from:

- A 45-day Industry Placement in local NHS healthcare laboratories
- Theoretical scientific concepts related to healthcare science
- English, Maths and digital provision built into the course
- UCAS points equivalent to A Level

Industry Partner:

We work with Lancashire NHS Teaching Hospitals Laboratories to provide you with an in-depth placement that allows you to develop real-life experiences in this industry and make meaningful connections with established professionals and experts.

What will I study?

You will develop a general understanding of health and science:

- core science concepts, including the structure of cells, tissues and large molecules, genetics, microbiology and immunology
- working within the health and science sector
- health, safety and environmental regulations
- managing information and data
- principles of good scientific and clinical practice

How will I be assessed?

You will be assessed via external assessments, case studies, research tasks, practical assessments and professional discussions. To achieve the overall T-Level programme, you will complete at least 315 hours of industry placement (approximately 45 days).

What progression is there?

You could progress directly from the T-Level into roles such as Healthcare Science assistant, Radiography assistant or Sterile services technician. Due to the high level of industry experience you receive, you would also be in a very strong position to move onto an Apprenticeship.

As T-Levels attract UCAS points, and are widely recognised by university and education providers, you can progress on to university if you wish. The T-Level Healthcare Science is accepted for entry into degree courses such as Human Biosciences, Nursing, Midwifery, Public Health and Pharmacy (with a Foundation year).

It could also lead you into a wide range of careers, including Chemical analyst, Research and development scientist, Biomedical engineer, Physiological scientist, and many other science, health, and research-based occupations.

SCIENCE



SCAN
here

Sport

Sport Level 2

Sport and Exercise Science Advanced Level 3

Sport Advanced Level 3

A vocational Sport course at Runshaw is a fantastic pathway into the sport and leisure industry. Whether it is furthering your knowledge at university or going straight into employment, our Sports courses will take you where you want to go!

All our courses are exciting and wide-ranging as we want you to leave multi-skilled and aware of all the opportunities that exist within the industry.

Please see our course leaflets at www.runshaw.ac.uk and press the '**Apply**' button. For guidance about what careers subjects can lead on to please access nationalcareers.service.gov.uk



Gym Manager

Medic

Physiotherapist

Sports Coach

Sport Development

Personal Trainer

SPORT

Level 2 Sport**What will I learn?**

This course is aimed at students who wish to progress to study Sport, PE Teaching, Sports Therapy, or Sports Coaching, or alternatively go into employment. Students are taught by a wide range of exceptionally qualified staff, including professional and semi-professional athletes.

Study areas include:

- Anatomy & Physiology
- Fitness for Sport & Exercise
- The Sports performer in Action
- Leading Sports Activities
- The Mind & Sports Performance
- Practical Sport
- Training & Fitness
- Sports Injuries

How will I be assessed?

Assessment methods are varied to meet the needs of all students and ensure a wide variety of skills are developed.

Assessments include:

- exams
- reports
- essays
- presentations
- interviews
- practical/observation

What progression is there?

Upon completion, you could progress in college or gain employment or an Apprenticeship.

Level 3 Advanced Sport & Exercise Science**What will I learn?**

Students are taught by a wide range of exceptionally qualified staff, including professional and semi-professional athletes who have worked in elite-level sports.

Throughout the Sport & Exercise Science course, you will explore:

- sports massage
- sport psychology and coaching
- exercise physiology
- sports nutrition
- specialised fitness training
- functional anatomy
- sports injuries
- biomechanics

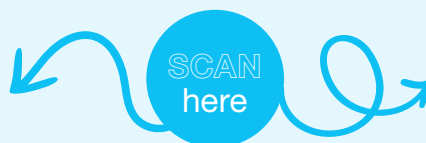
The course consists of 80% theory and 20% practical to support progression into university and employment.

How will I be assessed?

Assessment methods are varied to ensure a wide variety of skills are developed. In Sport we use a state-of-the-art online system to hand in and to mark student work.

Assessment includes:

- experiments
- reports
- essays
- presentations
- interviews
- practical/observation



#Future

Physiotherapist

Nutritionist

PE Teacher

Personal Trainer

Performance Analyst

Sport Psychologist

Level 3 Advanced Sport

What will I learn?

This course is aimed at students who wish to progress to study Sport, PE Teaching, Sports Therapy, or Sports Coaching, or alternatively go into employment. Students are taught by a wide range of exceptionally qualified staff, including professional and semi-professional athletes who have worked in elite-level sports.

Study areas include:

- Anatomy & Physiology
- Fitness for Sport & Wellbeing
- Rules and Regulations of Officiating
- Coaching for Sports Performance
- Practical Sport Performance
- Sports Leadership
- Application of Fitness Testing
- Sport Psychology

How will I be assessed?

Assessment methods are varied to meet the needs of all students and ensure the development of a wide variety of skills. Two units within each year are externally assessed.

Assessments include:

- exams
- reports
- essays
- presentations
- interviews
- practical/observation

What progression is there?

Many of our students progress to university degrees in PE Teaching, Sport Coaching and Sports Science courses. Alternatively, other pathways exist, such as employment in this sector or Apprenticeships.



SPORT

Tourism

Travel, Tourism & The Visitor Economy Level 2

Tourism Management (including Cabin Crew) Advanced Level 3

A vocational Tourism course at Runshaw is a fantastic pathway into the Tourism, Hospitality and Catering industries. Whether it is furthering your knowledge at university or going straight into employment, our Tourism courses will take you where you want to go!

All our courses are exciting and focus on industry expectations ensuring you are confidently skilled and aware of all the opportunities that exist within the industry.

Please see our course leaflets at www.runshaw.ac.uk and press the '**Apply**' **button**. For guidance about what careers subjects can lead on to please access nationalcareers.service.gov.uk

TRAVEL

Level 2



A quick glimpse at some of the units you will study.

- The Travel and Tourism Industry
- Know about Airlines and Airports
- UK Coastal Tourism
- Customer Service
- Work Experience
- Promotion in Travel and Tourism



Events Assistant

Hotel Receptionist

Tourism Assistant

Holiday Representative

Marketing Executive

Travel Advisor

TOURISM

Level 2 Travel, Tourism & The Visitor Economy

What will I learn?

Are you interested in travelling, attending events and festivals, dining out, and visiting museums and tourist attractions? If yes, the Travel, Tourism and Visitor Economy Course could be for you!

The tourism industry is incredibly valuable to the UK economy. Tourism is not just about holidaying but much more - Ecotourism, Cultural Tourism, Business Tourism, Medical Tourism, Religious Tourism, Domestic Tourism, and Outbound and Inbound Tourism.

This means there are jobs in travel, aviation, cruise, tourist attractions, sport, tour operators, travel agents, hotels, events, festivals, conferences and hospitality!

Many of the most successful companies worldwide are tourism companies, including Disney, Tui, Marriott, Hilton, Royal Caribbean, Centre Parcs, and Emirates.

During this one-year course, you will study the UK Travel & Tourism Industry, Promotions in Tourism, Airlines and Airports, Popular UK Destination, Customer Service and Work Experience in Tourism.

What enrichment can I look forward to?

- team building activities
- national airport trips
- numerous UK visits
- European city trip
- Airline cabin crew training at an elite UK facility

How will I be assessed?

The course is 100% coursework, so we have no exams. You will have an assignment each week, so organisation and time management skills are essential. We will assess you using written work, presentations (in different settings), Blogs, Vlogs, role plays, and group work.

What progression is there?

You can progress onto our Level 3 Tourism Management course, an apprenticeship, or secure a customer-facing position within travel and tourism, hospitality, conferences, or events.



#Future

Cabin Crew

Digital Marketing

Events Planner

Cruise Concierge

Hotel Manager

Visitor Experience

Level 3 Advanced Tourism Management

What will I learn?

3.1 million people are currently employed in tourism in the UK, and the industry is worth £126.9bn! Our course will equip you with the knowledge and skills necessary to become a successful employee in this dynamic industry.

The course consists of various modules that provide an overview of the industry's different sectors, such as digital marketing, events, cabin crew, business, cruise, customer service, storytelling, tour guiding, and environmental tourism.

As part of your course, you will complete six weeks of work experience in a tourism, event, or hospitality business. This is a fantastic opportunity to enhance your subject knowledge, develop essential knowledge and prepare you for a career in the tourism industry.

How will I be assessed?

We use a variety of innovative assessments to prepare you for a fantastic career in the tourism industry, such as:

- written reports/assignments
- blog posts
- industry case studies
- group discussions
- role plays
- practical observations
- academic posters
- virtual reality

What progression is there?

Many of our students progress onto university or apprenticeships before starting careers in Management for world-renowned companies. Alternatively, you can go straight into customer-facing roles within tourism, hospitality, events, or travel. Whatever you want to do, and wherever you want to go, Tourism Management will help you get there!



TOURISM



Visual Arts

Art and Design Level 2

Art and Design Level 3

Graphic Design Level 3

Embark on a vocational Visual Arts course at Runshaw, a unique pathway into the creative industries. Whether you're aiming to further your knowledge at university or dive straight into employment, our Visual Arts courses are designed to propel you towards your career goals!

At Runshaw, we foster an exciting and wide-ranging learning environment, where you will be supported and encouraged to be multi-skilled and aware of all the opportunities that exist within the industry. You will be provided with some art materials and print credit to use in lessons, and you will also be expected to provide some of your own art equipment, which can be purchased at college.

We also offer superb enrichment through gallery visits, external work placements, practical workshops, and trips to places of interest for gaining primary research.

Please see our course leaflets at www.runshaw.ac.uk and press the '**Apply**' button. For guidance about what careers subjects can lead on to please access nationalcareers.service.gov.uk



Artist

Art Gallery Manager

Art Teacher

Illustrator

Interior Designer

Pattern Designer

VISUAL ARTS

Level 2 Art & Design

What will I study?

In this one-year course, you will explore a wide range of 2D, 3D and moving image media, techniques and processes, working through the design process, completing primary research from which you will create initial ideas, and then developing these into a final piece. At the end of the course, you will complete a personal project, where you will write your brief and start to select media, techniques and processes you have previously enjoyed. As part of the course, you will also study English and/or Maths and develop employability skills.

How will I be assessed?

Assessment is primarily through internally assessed coursework and end-of-year external moderation. The practical nature of the exam work involves presenting your work visually.

The coursework includes both practical artwork and written analysis/evaluation, in which you will be expected to reflect on your own and other artists' work.

What progression is there?

Upon completion, most students progress to Level 3 Art & Design or Graphics course. However, you also have the option to advance to other non-art Level 3 courses within the college, an Apprenticeship, or employment.

Level 3 Art & Design

What will I study?

Over two years, you will be introduced to a broad range of materials, techniques and processes within a variety of specialist art areas, including drawing, printmaking, working with non-resistant materials, digital and traditional photography, textiles, surface patterns, computers in art, time-based media and contextual studies. You will have access to fantastic facilities such as Mac suites, photography studios, a darkroom, a 3D workshop, a print room, textile workrooms, and fine art studios.

How will I be assessed?

Through a portfolio of evidence, which is internally and externally assessed and moderated.

At the start of the course, you will be set theme-based projects designed to develop visual language, research skills, 2D and 3D problem solving and critical and contextual awareness in Art & Design. Exam work will be practical, including presenting your work visually; therefore, no revision is required for this course.

In Year 2, you will complete more personal work and focus more on developing as an artist/designer/maker.

What progression is there?

You can progress to university to study a range of courses, including Illustration, Textiles and Fashion, Theatre Design, 3D and Interior Design, Fine Art, Photography, Graphic Design, Animation and Games Design.

Level 2



Level 3



#Future

Art Director

Graphic Designer

Web Designer

Digital Illustrator

Marketing Manager

Architect

Level 3 Graphic Design

What will I study?

Working with industry-standard software in Apple Mac suites, you will explore and develop skills in various art and digital media, including typography, printmaking, moving images, digital manipulation/collage, contextual studies, and specialist digital illustration. Over two years, you will be taught techniques and processes in digital software such as Adobe Photoshop, InDesign, Illustrator, After Effects and Adobe XD, using these programs to explore image manipulation, vector graphics and layout design, as well as exploring and experimenting with traditional art materials; especially how manual work can be combined with digital techniques.

The first year is focused on developing your knowledge of Graphic Design and its related industries, whilst the second year develops your depth of understanding in the areas of Graphics you wish to pursue as a career. The course concludes with a personal Final Major Project, where you will take control of your learning and demonstrate your achievement by independently initiating, researching, completing and evaluating a final major project within your chosen professional context.

Graphic Design differs from GCSE Graphics/ Graphics Products because it does not include 3D Design. If you want to pursue a career in Product or 3D-related Design, please see our Level 3 in Art & Design.

How will I be assessed?

Through a portfolio of evidence which is internally assessed and externally moderated. At the start of the course, you will be given theme-based projects designed to develop visual language, research skills, 2D problem-solving, and critical and contextual awareness in graphic design. Exam work will be practical, including presenting your work visually; therefore, no revision is required for this course.

What progression is there?

You can progress to university to study a range of courses, including Graphic Design, Animation and Games Design, Illustration, and Photography. Some students also progress on to non-art-related degrees, Apprenticeships, and employment.



SCAN
here

VISUAL ARTS

HOW TO APPLY

1

Visit www.runshaw.ac.uk

2

Choose a course and apply **online**

3

Attend your interview to discuss your **options**

4

Register from May to attend our Year 11 Subject Choice Days in July

5

Receive your GCSE results and attend our **enrolment days** in August

Entry Requirements - General

For our A Level Programme our entry requirements are a minimum of 5x Grade 5, including Maths and English.

For our Advanced Vocational courses our entry requirements are a minimum of 5x Grade 4, including either Maths or English Language at Grade 4 or above, and no less than a Grade 3 in the other.

For our pre-Advanced courses our offer is usually a minimum of 4x Grade 3, including English and Maths.

Please note that any student not achieving a Grade 4 in GCSE Maths/English Language will resit these GCSEs alongside their main college course.

Specific Courses/ Subjects

Please note that some courses and subjects will have additional specific entry requirements or require DBS clearance to undertake placements. Information about this can be found on the Apply Portal and on your offer letter which you will receive after your interview.

**Please note that the following A Level subjects require a Grade 6 in English and/or Languages and/ or Maths and/or Science: English, Maths, Biology, Chemistry, Physics, Geology, French, German, Spanish, EPQ.*

Disability and Equal Opportunities

Runshaw College is committed to equality of opportunity for all members of its community and we respect all students for their individuality, abilities and aspirations. We actively encourage applications from students with disabilities or learning difficulties and you will be given the support you need to achieve your full learning potential. If you need more information, please contact the college for a personal interview and discussion about how we can support you in your studies.

Financial Support

The 16-19 Bursary Fund is provided by the Government to assist students who face the greatest barriers to continuing in education because of financial difficulty. The Fund can assist students with the cost of getting to college and help meet the cost of any equipment or clothing for their course. A bursary of £1,200 a year can be paid to the most vulnerable students - in care, care leavers, young people in receipt of income support (or Universal Credit) and disabled young people in receipt of Disability Living Allowance (or Personal Independence Payments) who are also in receipt of Employment Support Allowance (or UC).

Free Meals

Some college students may be entitled to free meals. We will check your entitlement to these when you return your bursary application form and supporting evidence.

Information in the Prospectus

Courses are offered in good faith but Runshaw reserves the right to:

- cancel courses if they do not reach enrolment targets
- change the syllabus or the entry requirements of a course without prior notice
- alter the curriculum in response to political or local changes

Admissions

Runshaw may require applicants to provide, or allow access to, evidence of suitability for admission to a particular course. This may be a reference from a previous education institution, employer or doctor.

Students will be expected to:

- meet the entry criteria for their chosen course and provide proof of examination grades, a good record of achievement, a good record of attendance and a supportive reference
- meet the residency criteria laid down by the funding council or pay the appropriate course fee
- Where applicants have complex or profound needs, a special Admissions Assessment will be undertaken to consider whether the college can offer suitable curriculum and support for the young person
- disclose any criminal conviction

Safeguarding

Runshaw College is committed to safeguarding and promoting the welfare of children and vulnerable adults and expects all staff to share this commitment.

Holidays in Term Time

To support our students, holidays during term time are not permitted or authorised. You can find the college term dates at: www.runshaw.ac.uk/life-at-runshaw/college-calendar/

Contact Us

If you would like any further information about any of the courses or activities included in our prospectus please contact:

Schools Liaison
Runshaw College
Langdale Road
Leyland
Lancashire
PR25 3DQ

Telephone: **01772 643000**

Email: welcometorunshaw@runshaw.ac.uk

Website: www.runshaw.ac.uk



Bus Routes to Runshaw

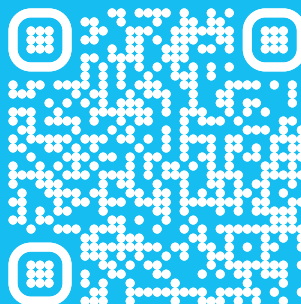
Our college transport service provides safe, reliable and cost effective transport to students from across the North West. We have over 50 services covering Lancashire, Greater Manchester and Merseyside to ensure that students are punctual and able to get home safely at the end of the college day. Our friendly Transport Team are available throughout the college day to deal with any queries that students or parents/guardians may have about the college transport services, working from 7:30am-5pm each day and based within Student Services. College bus passes can be purchased annually or the cost can be split with our semester passes, available in September and January of each year. Services arrive at college for 8.50am to ensure that students are on time for lessons and leave at 3.55pm each day.



Scan the QR to explore

Find out more about the subjects you might choose at Runshaw by following them on social media.

The college has over 80 subject-specific social media accounts which contain all the latest information and activities that our students take part in.



Download our app!

- Get all the latest news and notifications
- Keep up with all our social media
- Search our courses
- Apply online



FIND US ON SOCIAL MEDIA



Our upcoming Open Events:

**Saturday 21 September
Saturday 16 November
Wednesday 5 March**

www.runshaw.ac.uk